

Fact Book

Academic Year 2014-2015



COLORADO COMMUNITY
COLLEGE SYSTEM

Produced by the Office of Institutional Research

Issued April 2016

Table of Contents

| | |
|--|-----------|
| SYSTEM HIGHLIGHTS..... | 3 |
| INTRODUCTION | 4 |
| SUMMARY DATA – FALL 2014 AND ANNUAL 2014-15..... | 5 |
| DEMOGRAPHICS | 7 |
| HEADCOUNT AND FTE BY COLLEGE: 2014-15 | 7 |
| ANNUAL HEADCOUNT ENROLLMENT: 2005-06 AND 2010-11 TO 2014-15 | 8 |
| ANNUAL FTE ENROLLMENT: 2005-06 AND 2010-11 TO 2014-15..... | 9 |
| HEADCOUNT RESIDENCY BY TYPE AND BY COLLEGE: 2014-15 | 10 |
| FTE RESIDENCY BY TYPE AND BY COLLEGE: 2014-15 | 10 |
| FALL HEADCOUNT ENROLLMENT: 2010 TO 2014..... | 11 |
| FALL FTE ENROLLMENT: 2010 TO 2014 | 11 |
| HEADCOUNT BY FULL AND PART-TIME STATUS BY COLLEGE: 2014-15..... | 12 |
| PERCENTAGE OF HEADCOUNT BY ETHNICITY BY COLLEGE: 2014-15..... | 13 |
| PERCENT OF HEADCOUNT BY AGE GROUP BY COLLEGE: 2014-15 | 14 |
| HEADCOUNT BY GENDER BY COLLEGE: 2014-15..... | 15 |
| HEADCOUNT OF MILITARY-RELATED STUDENTS: 2014-15..... | 16 |
| HEADCOUNT BY DEGREE-SEEKING TYPE BY COLLEGE: 2014-15 | 17 |
| PARENTAL EDUCATION LEVEL | 18 |
| RETENTION | 19 |
| FALL-TO-FALL FULL- AND PART-TIME RETENTION TRENDS BY COLLEGE..... | 19 |
| DEGREES | 20 |
| DEGREES AWARDED BY TYPE OF AWARD: 2014-15..... | 20 |
| DEGREES AWARDED BY COLLEGE: 2014-15 | 21 |
| TOP DEGREE PROGRAM BY COLLEGE: 2014-15..... | 22 |
| TOP DEGREE PROGRAMS FOR CCCS BY TYPE OF DEGREE: 2014-15 | 22 |
| DEGREES WITH DESIGNATION AWARDED: 2012-13 THROUGH 2014-15 | 23 |
| TRANSFERS | 24 |
| TOTAL NUMBER OF STUDENT TRANSFERS AND TOP TRANSFER DESTINATIONS..... | 24 |
| TOP FIVE FOUR-YEAR TRANSFER DESTINATIONS..... | 25 |
| TRANSFERS TO COLORADO FOUR-YEAR INSTITUTIONS: FALL 2014 TO FALL 2015 | 26 |
| TOP FIVE FOUR-YEAR PRIVATE TRANSFER DESTINATIONS..... | 27 |
| GRADUATION AND GRADUATION/TRANSFER RATES..... | 28 |
| THREE-YEAR GRADUATION AND TRANSFER RATE..... | 28 |
| THREE-YEAR GRADUATION RATE TRENDS | 29 |
| THREE-YEAR GRADUATION RATE TRENDS: MINORITY STUDENTS..... | 30 |
| THREE-YEAR COMBINED GRADUATION AND TRANSFER RATE | 31 |

| | |
|---|-----------|
| DEVELOPMENTAL EDUCATION..... | 32 |
| DEVELOPMENTAL COURSE COMPLETION RATES BY SUBJECT | 32 |
| DEVELOPMENTAL EDUCATION COURSE COMPLETION RATES BY COLLEGE – ALL SUBJECTS | 33 |
| PERCENT OF STUDENTS ENROLLED IN DEVELOPMENTAL COURSES BY COLLEGE | 33 |
| PERCENT OF FTE STUDENTS ENROLLED IN DEVELOPMENTAL COURSES BY COLLEGE..... | 34 |
| CONCURRENT ENROLLMENT..... | 35 |
| HIGH SCHOOL STUDENTS ATTENDING CCCS COLLEGES BY COLLEGE..... | 35 |
| FACULTY | 36 |
| PROPORTION OF CREDIT HOURS TAUGHT BY STAFF CLASSIFICATION: 2014-15 | 36 |
| GLOSSARY OF TERMS..... | 37 |

System Highlights

This report provides data on enrollment, retention, degrees awarded, developmental education, and high school (Concurrent) enrollment for the thirteen colleges of the Colorado Community College System (CCCS). Those colleges are:

| | |
|---|-------------------------------|
| Arapahoe Community College | Northeastern Junior College |
| Colorado Northwestern Community College | Otero Junior College |
| Community College of Aurora | Pikes Peak Community College |
| Community College of Denver | Pueblo Community College |
| Front Range Community College | Red Rocks Community College |
| Lamar Community College | Trinidad State Junior College |
| Morgan Community College | |

- **Enrollment** – Across the system, annual unduplicated undergraduate enrollment decreased 5.5 percent, from 134,324 to 126,963. Likewise, full-time equivalent enrollment (FTE) declined from 56,083.0 to 53,013.4, a 5.5 percent decrease. In addition to the undergraduate population, CCCS trains more than 17,000 Coloradans each year through various other programs. CCCS is the largest higher education system in the state.
- **Fall to Fall Retention** – The overall retention rate of full and part-time students increased from 47.8 percent to 48.6 percent.
- **Degrees Awarded** - CCCS colleges awarded 18,074 credentials in AY 2014-15, an increase of 5.7 percent over the AY 2013-14 level of 17,099.
- **Graduation Rate** - The graduation rate for first-time, full-time, degree-seeking students was 20.6 percent, an increase from 20.4 percent in AY 2013-14.
- **Developmental Education** - The proportion of students enrolled in remedial courses dropped from 22.9 percent in AY 2013-14 to 19.3 percent in AY 2014-15, while the proportion of FTE dropped from 10.7 percent to 8.1 percent. The overall system remedial completion rate increased from 68.2 percent to 69.4 percent.
- **High School Student Enrollment** – High school students attending CCCS colleges increased 8.6 percent, from 18,885 to 20,505. Over the last five years, the number of high school students attending CCCS colleges increased 63.2 percent.
- **Student Diversity** – Minority students comprise 34.6 percent of the student population. Forty-four percent of the student population is nontraditional in that they are at least 25 years of age. Three-quarters of CCCS students attend college part time.
- **Transfers** – 11,049 students, or 13.5 percent of the Fall 2014 cohort, transferred to a four-year college in Fall 2015.

Introduction

This fact book provides various student data for the thirteen colleges of the Colorado Community College System (CCCS). It is intended to be a one-stop resource for information. The Office of Institutional Research at the system office produces this report. Additional information about some of the subjects in this document, as well as previous year's fact books, can be found at <https://www.cccs.edu/about-cccs/institutional-research/>.

The data in this report are in tabular and/or graphic format. Data are from the Colorado Student Unit Record Data System (SURDS) or other data reported to the Colorado Department of Higher Education (CDHE), the federal Integrated Postsecondary Education Data System (IPEDS), or the National Student Clearinghouse (NSC). As SURDS and other reports submitted to CDHE are the predominant sources of data, a data source is indicated only if they are not the data source.

A Glossary of Terms is also included at the end of the document that provides additional descriptions and definitions to assist the reader.

Summary Data – Fall 2014 and Annual 2014-15

| Data Element | Fall 2014 | Fall 2014 | Annual | Annual |
|------------------------------------|------------------|-------------------|------------------|-------------------|
| <u>Enrollment Type</u> | <u>Headcount</u> | <u>FTE</u> | <u>Headcount</u> | <u>FTE</u> |
| Resident | 77,771 | 22,464.0 | 114,600 | 49,999.5 |
| Non-Resident | 6,383 | 1,348.9 | 12,359 | 3,014.0 |
| Unknown* | 0 | 0.0 | 4 | 0.0 |
| Total | 84,154 | 23,812.8 | 126,963 | 53,013.4 |
| <u>Demographics</u> | <u>Headcount</u> | <u>% of Total</u> | <u>Headcount</u> | <u>% of Total</u> |
| Minority | 27,351 | 34.6% | 41,194 | 34.6% |
| Female | 47,363 | 56.3% | 69,998 | 55.2% |
| Average Age | 26 | | 27 | |
| <u>Enrollment Characteristics</u> | <u>Count</u> | <u>% of Total</u> | <u>Count</u> | <u>% of Total</u> |
| First Time Students | 11,617 | 13.8% | 18,751 | 14.8% |
| Transfer Students | 9,374 | 11.1% | 19,675 | 15.5% |
| Continuing Students | 49,849 | 59.2% | 67,725 | 53.3% |
| High School Students | 13,314 | 15.8% | 20,505 | 16.2% |
| Unknown | 0 | 0.0% | 307 | 0.2% |
| Total | 84,154 | 100.0% | 126,963 | 100.0% |
| <u>Headcount by Degree Type</u> | <u>Count</u> | <u>% of Total</u> | <u>Count</u> | <u>% of Total</u> |
| Associate of Arts (AA) | 21,000 | 25.0% | 28,812 | 22.7% |
| Associate of Science (AS) | 17,098 | 20.3% | 24,888 | 19.6% |
| Associate of Applied Science (AAS) | 19,483 | 23.2% | 26,479 | 20.9% |
| Associate of General Studies (AGS) | 8,427 | 10.0% | 11,957 | 9.4% |
| Certificate | 6,343 | 7.5% | 11,878 | 9.4% |
| Non-degree/Unknown | 11,803 | 14.0% | 22,949 | 18.1% |
| Total | 84,154 | 100.0% | 126,963 | 100.0% |
| Average Class Size** | 17 | | 17 | |
| <u>Degrees Awarded: 2014-15</u> | <u>Headcount</u> | <u>% of Total</u> | | |
| AA | 2,388 | 13.2% | | |
| AS | 897 | 5.0% | | |
| AAS | 2,978 | 16.5% | | |
| AGS | 1,162 | 6.4% | | |
| 2-yr Certificate | 1,803 | 10.0% | | |
| 1-yr Certificate | 8,846 | 48.9% | | |
| Total | 18,074 | 100.0% | | |

*Headcount and FTE data are derived from two different data submittals to CDHE, explaining the fact that the residency of some students is not known for headcount figures but is available for the FTE count.

**Excludes online courses and those with less than 6 enrollments.

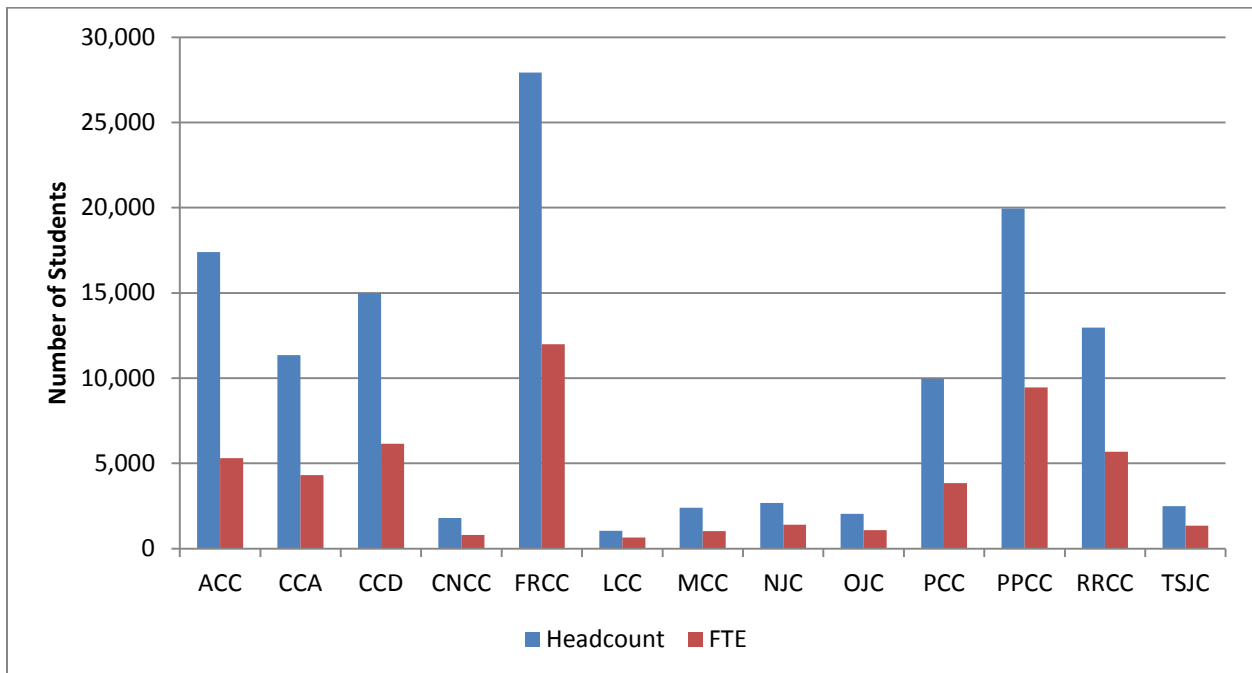
| <u>Outcomes</u> | <u>Headcount</u> | <u>% of Total</u> |
|--|------------------|-------------------|
| Fall 2013 to Fall 2014 Retained or Completed | | 48.6% |
| Three-Year Graduation Rate (Based on Fall 2011 cohort) | | 20.6% |
| Transfers to 4-year colleges in Fall 2015 | 11,049 | 13.5% |
| Remedial Completion Rate (AY 2014-15) | | 69.4% |
| <u>Tuition: 2014-15***</u> | | |
| Annual Full-time Resident Tuition | \$3,747.00 | |
| Annual Full-time Non-Resident Tuition: | | |
| ACC, CCA, CCD, FRCC, MCC, PCC, PPCC, RRCC | \$15,371 | |
| CNCC, LCC, NJC,OJC, TSJC | \$6,704 | |
| <u>Accessibility</u> | | |
| Percentage of courses offered online, hybrid, evenings, or weekend | | 49.4% |

***Based on 30 credit hours; non-resident tuition may be lower based on a student's state of residence.

Demographics

Headcount and FTE by College: 2014-15

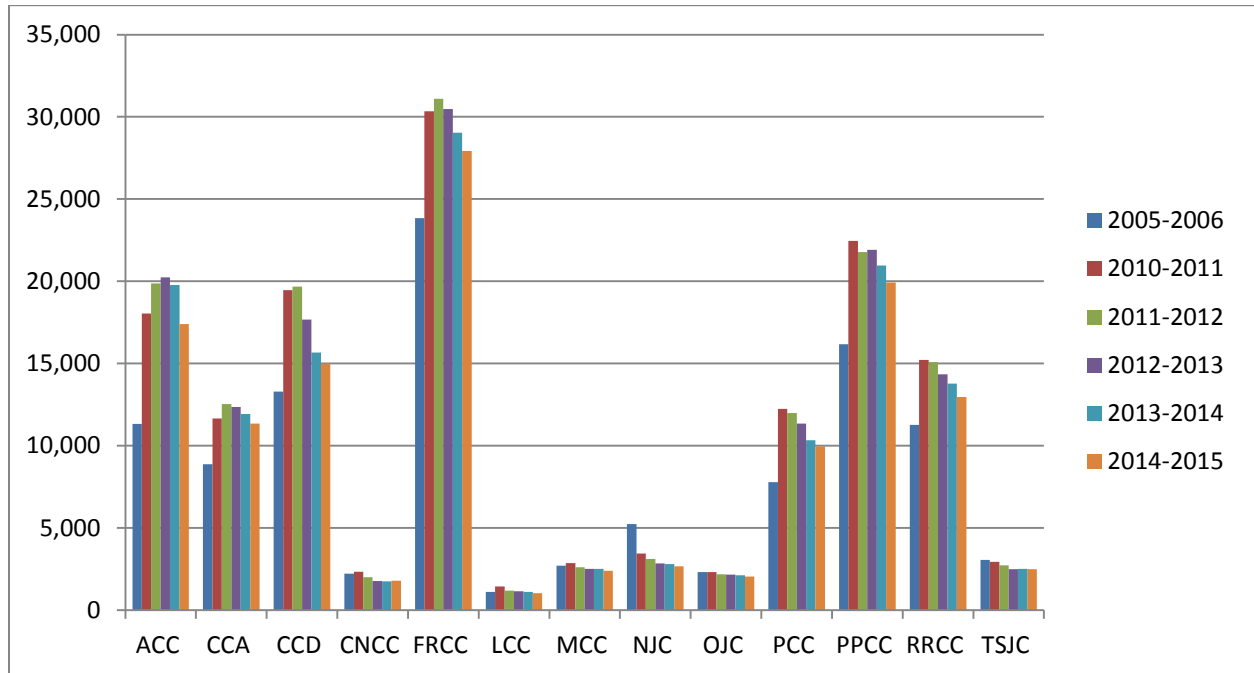
| College | Headcount | Percent of Total Headcount | FTE | Percent of Total FTE |
|-------------------|----------------|----------------------------|-----------------|----------------------|
| ACC | 17,403 | 13.7% | 5,298.1 | 10.0% |
| CCA | 11,355 | 8.9% | 4,307.9 | 8.1% |
| CCD | 14,988 | 11.8% | 6,141.2 | 11.6% |
| CNCC | 1,786 | 1.4% | 807.3 | 1.5% |
| FRCC | 27,925 | 22.0% | 11,980.8 | 22.6% |
| LCC | 1,040 | 0.8% | 646.9 | 1.2% |
| MCC | 2,402 | 1.9% | 1,026.7 | 1.9% |
| NJC | 2,668 | 2.1% | 1,404.1 | 2.6% |
| OJC | 2,043 | 1.6% | 1,088.9 | 2.1% |
| PCC | 9,960 | 7.8% | 3,848.4 | 7.3% |
| PPCC | 19,939 | 15.7% | 9,454.8 | 17.8% |
| RRCC | 12,964 | 10.2% | 5,672.1 | 10.7% |
| TSJC | 2,490 | 2.0% | 1,336.0 | 2.5% |
| CCCS Total | 126,963 | 100.0% | 53,013.4 | 100.0% |



Annual Headcount Enrollment: 2005-06 and 2010-11 to 2014-15

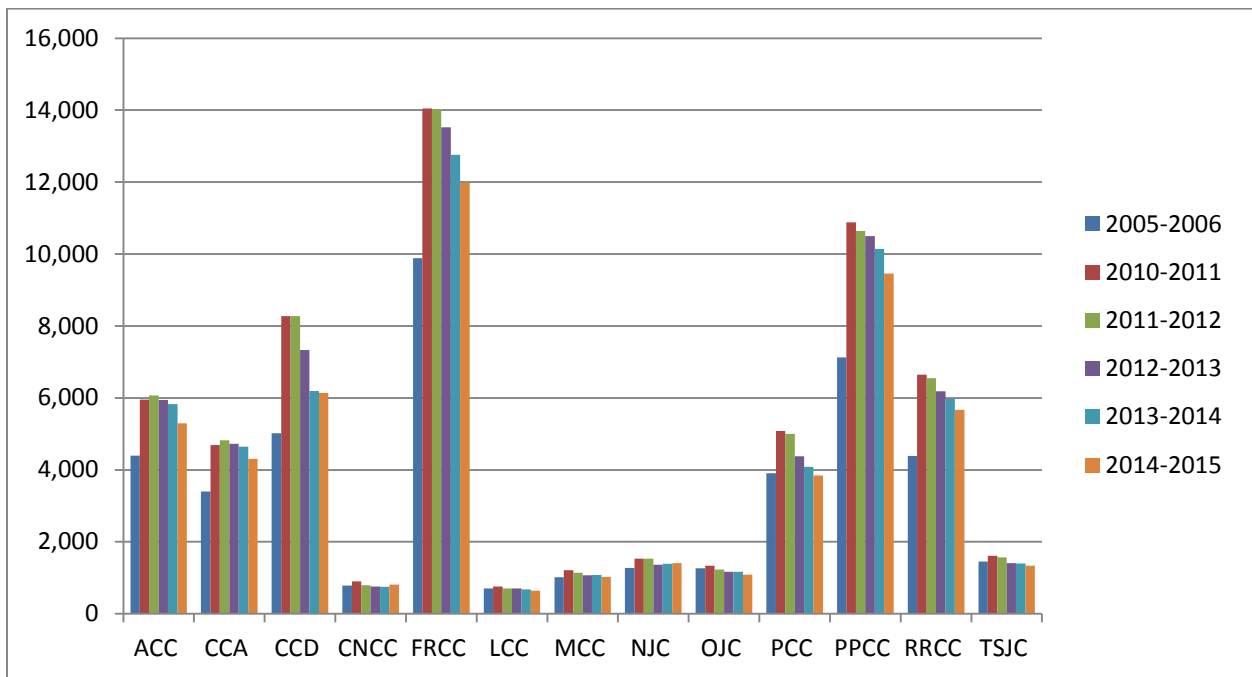
| College | 2005-2006 | 2010-2011 | 2011-2012 | 2012-2013 | 2013-2014 | 2014-2015 | Five-Year % Change | Ten-Year % Change |
|-------------------|----------------|----------------|----------------|----------------|----------------|----------------|--------------------|-------------------|
| ACC | 11,337 | 18,036 | 19,881 | 20,246 | 19,775 | 17,403 | -3.5% | 53.5% |
| CCA | 8,873 | 11,663 | 12,533 | 12,357 | 11,935 | 11,355 | -2.6% | 28.0% |
| CCD | 13,294 | 19,455 | 19,682 | 17,672 | 15,669 | 14,988 | -23.0% | 12.7% |
| CNCC | 2,214 | 2,341 | 2,009 | 1,776 | 1,751 | 1,786 | -23.7% | -19.3% |
| FRCC | 23,832 | 30,331 | 31,103 | 30,485 | 29,044 | 27,925 | -7.9% | 17.2% |
| LCC | 1,110 | 1,437 | 1,195 | 1,151 | 1,109 | 1,040 | -27.6% | -6.3% |
| MCC | 2,701 | 2,865 | 2,620 | 2,518 | 2,520 | 2,402 | -16.2% | -11.1% |
| NJC | 5,246 | 3,451 | 3,113 | 2,849 | 2,806 | 2,668 | -22.7% | -49.1% |
| OJC | 2,313 | 2,321 | 2,177 | 2,156 | 2,121 | 2,043 | -12.0% | -11.7% |
| PCC | 7,789 | 12,245 | 11,995 | 11,345 | 10,331 | 9,960 | -18.7% | 27.9% |
| PPCC | 16,168 | 22,462 | 21,782 | 21,922 | 20,962 | 19,939 | -11.2% | 23.3% |
| RRCC | 11,263 | 15,229 | 15,090 | 14,352 | 13,787 | 12,964 | -14.9% | 15.1% |
| TSJC | 3,050 | 2,947 | 2,730 | 2,501 | 2,514 | 2,490 | -15.5% | -18.4% |
| CCCS Total | 109,190 | 144,783 | 145,910 | 141,330 | 134,324 | 126,963 | -12.3% | 16.3% |

*ACC's 2005-2006 count does not include NCTI students; CNCC's 2005-2006 count does not include summer term.



Annual FTE Enrollment: 2005-06 and 2010-11 to 2014-15

| College | 2005-2006 | 2010-2011 | 2011-2012 | 2012-2013 | 2013-2014 | 2014-2015 | Five-Year % Change | Ten-Year % Change |
|-------------------|-----------------|-----------------|-----------------|-----------------|-----------------|-----------------|--------------------|-------------------|
| ACC | 4,398.1 | 5,949.3 | 6,066.9 | 5,942.0 | 5,826.1 | 5,298.1 | -10.9% | 20.5% |
| CCA | 3,401.1 | 4,693.2 | 4,819.4 | 4,729.7 | 4,644.4 | 4,307.9 | -8.2% | 26.7% |
| CCD | 5,022.0 | 8,273.0 | 8,277.2 | 7,328.7 | 6,195.1 | 6,141.2 | -25.8% | 22.3% |
| CNCC | 782.9 | 902.8 | 795.9 | 756.6 | 752.2 | 807.3 | -10.6% | 3.1% |
| FRCC | 9,883.9 | 14,051.4 | 14,024.5 | 13,525.9 | 12,759.2 | 11,980.8 | -14.7% | 21.2% |
| LCC | 704.6 | 762.6 | 705.5 | 706.9 | 679.2 | 646.9 | -15.2% | -8.2% |
| MCC | 1,020.0 | 1,209.7 | 1,136.4 | 1,069.4 | 1,077.1 | 1,026.7 | -15.1% | 0.7% |
| NJC | 1,274.7 | 1,531.2 | 1,528.9 | 1,366.3 | 1,387.7 | 1,404.1 | -8.3% | 10.2% |
| OJC | 1,261.9 | 1,338.8 | 1,225.9 | 1,167.6 | 1,163.1 | 1,088.9 | -18.7% | -13.7% |
| PCC | 3,904.9 | 5,082.5 | 5,004.8 | 4,377.0 | 4,082.2 | 3,848.4 | -24.3% | -1.4% |
| PPCC | 7,128.8 | 10,882.0 | 10,640.7 | 10,500.0 | 10,146.5 | 9,454.8 | -13.1% | 32.6% |
| RRCC | 4,387.0 | 6,649.8 | 6,545.6 | 6,185.9 | 5,971.0 | 5,672.1 | -14.7% | 29.3% |
| TSJC | 1,448.0 | 1,614.0 | 1,568.8 | 1,407.6 | 1,399.3 | 1,336.0 | -17.2% | -7.7% |
| CCCS Total | 44,617.9 | 62,940.2 | 62,340.7 | 59,063.7 | 56,083.0 | 53,013.4 | -15.8% | 18.8% |



Headcount Residency by Type and by College: 2014-15

| College | Resident Headcount | Resident Percentage | Non-Resident Headcount | Non-Resident Percentage | Total Headcount | Total as % of CCCS Total |
|--------------------|--------------------|---------------------|------------------------|-------------------------|-----------------|--------------------------|
| ACC | 13,959 | 80.2% | 3,444 | 19.8% | 17,403 | 13.7% |
| CCA | 10,993 | 96.8% | 362 | 3.2% | 11,355 | 8.9% |
| CCD | 13,777 | 91.9% | 1,211 | 8.1% | 14,988 | 11.8% |
| CNCC | 1,530 | 85.7% | 256 | 14.3% | 1,786 | 1.4% |
| FRCC | 25,808 | 92.4% | 2,114 | 7.6% | 27,922 | 22.0% |
| LCC | 909 | 87.4% | 131 | 12.6% | 1,040 | 0.8% |
| MCC | 2,355 | 98.1% | 46 | 1.9% | 2,401 | 1.9% |
| NJC | 2,448 | 91.8% | 220 | 8.2% | 2,668 | 2.1% |
| OJC | 1,881 | 92.1% | 162 | 7.9% | 2,043 | 1.6% |
| PCC | 7,357 | 73.9% | 2,603 | 26.1% | 9,960 | 7.8% |
| PPCC | 19,179 | 96.2% | 760 | 3.8% | 19,939 | 15.7% |
| RRCC | 12,304 | 94.9% | 660 | 5.1% | 12,964 | 10.2% |
| TSJC | 2,100 | 84.3% | 390 | 15.7% | 2,490 | 2.0% |
| CCCS Total* | 114,600 | 90.3% | 12,359 | 9.7% | 126,959 | 100.0% |

*The total headcount does not sum to 126,963 because 4 student records did not contain residency information.

FTE Residency by Type and by College: 2014-15

| College | Resident FTE | Resident Percentage | Non-Resident FTE | Non-Resident Percentage | Total FTE | Total as % of CCCS Total |
|-------------------|-----------------|---------------------|------------------|-------------------------|-----------------|--------------------------|
| ACC | 5,074.7 | 95.8% | 223.5 | 4.2% | 5,298.1 | 10.0% |
| CCA | 4,155.3 | 96.5% | 152.6 | 3.5% | 4,307.9 | 8.1% |
| CCD | 5,604.0 | 91.3% | 537.2 | 8.7% | 6,141.2 | 11.6% |
| CNCC | 647.1 | 80.2% | 160.2 | 19.8% | 807.3 | 1.5% |
| FRCC | 11,165.3 | 93.2% | 815.5 | 6.8% | 11,980.8 | 22.6% |
| LCC | 566.6 | 87.6% | 80.3 | 12.4% | 646.9 | 1.2% |
| MCC | 1,009.8 | 98.4% | 16.9 | 1.6% | 1,026.7 | 1.9% |
| NJC | 1,303.1 | 92.8% | 101.0 | 7.2% | 1,404.1 | 2.6% |
| OJC | 959.3 | 88.1% | 129.6 | 11.9% | 1,088.9 | 2.1% |
| PCC | 3,753.6 | 97.5% | 94.8 | 2.5% | 3,848.4 | 7.3% |
| PPCC | 9,168.3 | 97.0% | 286.5 | 3.0% | 9,454.8 | 17.8% |
| RRCC | 5,407.4 | 95.3% | 264.7 | 4.7% | 5,672.1 | 10.7% |
| TSJC | 1,184.9 | 88.7% | 151.1 | 11.3% | 1,336.0 | 2.5% |
| CCCS Total | 49,999.5 | 94.3% | 3,014.0 | 5.7% | 53,013.4 | 100.0% |

Fall Headcount Enrollment: 2010 to 2014

| College | 2010 | 2011 | 2012 | 2013 | 2014 | Five-Yr. Change |
|-------------------|---------------|---------------|---------------|---------------|---------------|------------------------|
| ACC | 9,961 | 11,097 | 11,806 | 11,539 | 10,404 | 4.4% |
| CCA | 7,644 | 7,824 | 7,908 | 7,874 | 7,617 | -0.4% |
| CCD | 12,901 | 13,053 | 11,901 | 10,432 | 10,296 | -20.2% |
| CNCC | 1,450 | 1,301 | 1,158 | 1,138 | 1,145 | -21.0% |
| FRCC | 20,092 | 20,568 | 20,527 | 19,619 | 18,761 | -6.6% |
| LCC | 1,051 | 935 | 916 | 905 | 839 | -20.2% |
| MCC | 1,965 | 1,885 | 1,839 | 1,851 | 1,837 | -6.5% |
| NJC | 2,214 | 2,154 | 1,971 | 1,962 | 1,776 | -19.8% |
| OJC | 1,823 | 1,546 | 1,456 | 1,449 | 1,434 | -21.3% |
| PCC | 7,943 | 8,055 | 7,432 | 6,718 | 6,203 | -21.9% |
| PPCC | 15,299 | 14,725 | 15,175 | 14,634 | 13,947 | -8.8% |
| RRCC | 9,826 | 9,544 | 9,031 | 8,600 | 8,112 | -17.4% |
| TSJC | 1,916 | 1,839 | 1,691 | 1,791 | 1,783 | -6.9% |
| CCCS Total | 94,085 | 94,526 | 92,811 | 88,512 | 84,154 | -10.6% |

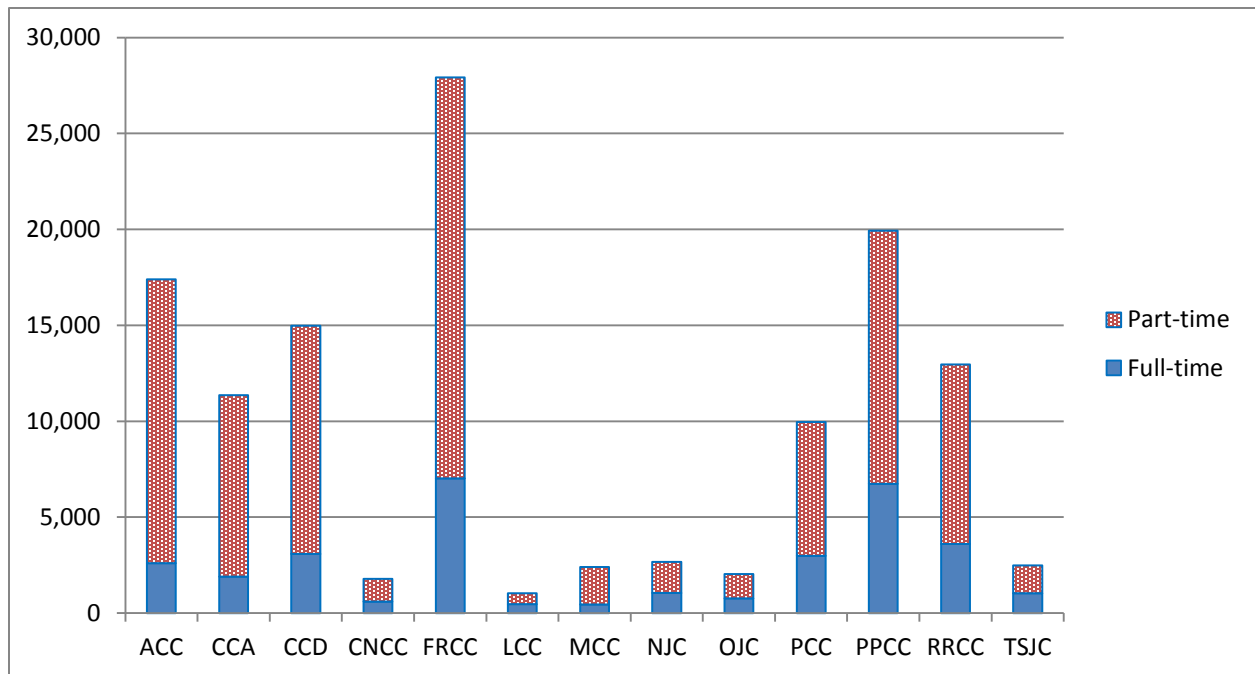
Fall FTE Enrollment: 2010 to 2014

| College | 2010 | 2011 | 2012 | 2013 | 2014 | Five-Yr. Change |
|-------------------|-----------------|-----------------|-----------------|-----------------|-----------------|------------------------|
| ACC | 2,549.1 | 2,652.8 | 2,592.1 | 2,521.6 | 2,335.5 | -8.4% |
| CCA | 2,025.7 | 2,024.0 | 2,034.4 | 2,015.8 | 1,910.6 | -5.7% |
| CCD | 3,653.2 | 3,516.5 | 3,258.4 | 2,803.1 | 2,840.7 | -22.2% |
| CNCC | 409.5 | 376.6 | 367.6 | 353.5 | 371.6 | -9.3% |
| FRCC | 6,108.0 | 6,069.9 | 6,010.0 | 5,671.3 | 5,334.9 | -12.7% |
| LCC | 349.7 | 334.6 | 341.3 | 335.9 | 314.3 | -10.1% |
| MCC | 534.5 | 508.9 | 484.9 | 488.8 | 473.4 | -11.4% |
| NJC | 737.4 | 744.7 | 671.3 | 659.5 | 681.4 | -7.6% |
| OJC | 668.3 | 570.8 | 521.7 | 528.9 | 507.2 | -24.1% |
| PCC | 2,231.9 | 2,211.0 | 1,968.2 | 1,889.6 | 1,758.9 | -21.2% |
| PPCC | 4,765.5 | 4,613.8 | 4,689.6 | 4,539.3 | 4,224.6 | -11.4% |
| RRCC | 2,921.1 | 2,803.1 | 2,648.1 | 2,520.4 | 2,436.7 | -16.6% |
| TSJC | 719.2 | 695.1 | 633.9 | 654.2 | 623.1 | -13.4% |
| CCCS Total | 27,673.1 | 27,121.9 | 26,221.4 | 24,982.0 | 23,812.8 | -13.9% |

Headcount by Full and Part-Time Status by College: 2014-15

| College | Full-Time Headcount | Full-Time Percentage | Part-Time Headcount | Part-Time Percentage | Total Headcount | Total as % of CCCS Total |
|-------------------|---------------------|----------------------|---------------------|----------------------|-----------------|--------------------------|
| ACC | 2,607 | 15.0% | 14,793 | 85.0% | 17,400 | 13.7% |
| CCA | 1,911 | 16.8% | 9,444 | 83.2% | 11,355 | 8.9% |
| CCD | 3,091 | 20.6% | 11,897 | 79.4% | 14,988 | 11.8% |
| CNCC | 601 | 33.7% | 1,185 | 66.3% | 1,786 | 1.4% |
| FRCC | 7,020 | 25.1% | 20,905 | 74.9% | 27,925 | 22.0% |
| LCC | 475 | 45.7% | 565 | 54.3% | 1,040 | 0.8% |
| MCC | 458 | 19.1% | 1,944 | 80.9% | 2,402 | 1.9% |
| NJC | 1,054 | 39.5% | 1,612 | 60.5% | 2,666 | 2.1% |
| OJC | 772 | 37.8% | 1,271 | 62.2% | 2,043 | 1.6% |
| PCC | 2,985 | 30.0% | 6,975 | 70.0% | 9,960 | 7.8% |
| PPCC | 6,737 | 33.8% | 13,202 | 66.2% | 19,939 | 15.7% |
| RRCC | 3,613 | 27.9% | 9,351 | 72.1% | 12,964 | 10.2% |
| TSJC | 1,038 | 41.7% | 1,452 | 58.3% | 2,490 | 2.0% |
| CCCS Total | 32,362 | 25.5% | 94,596 | 74.5% | 126,958 | 100.0% |

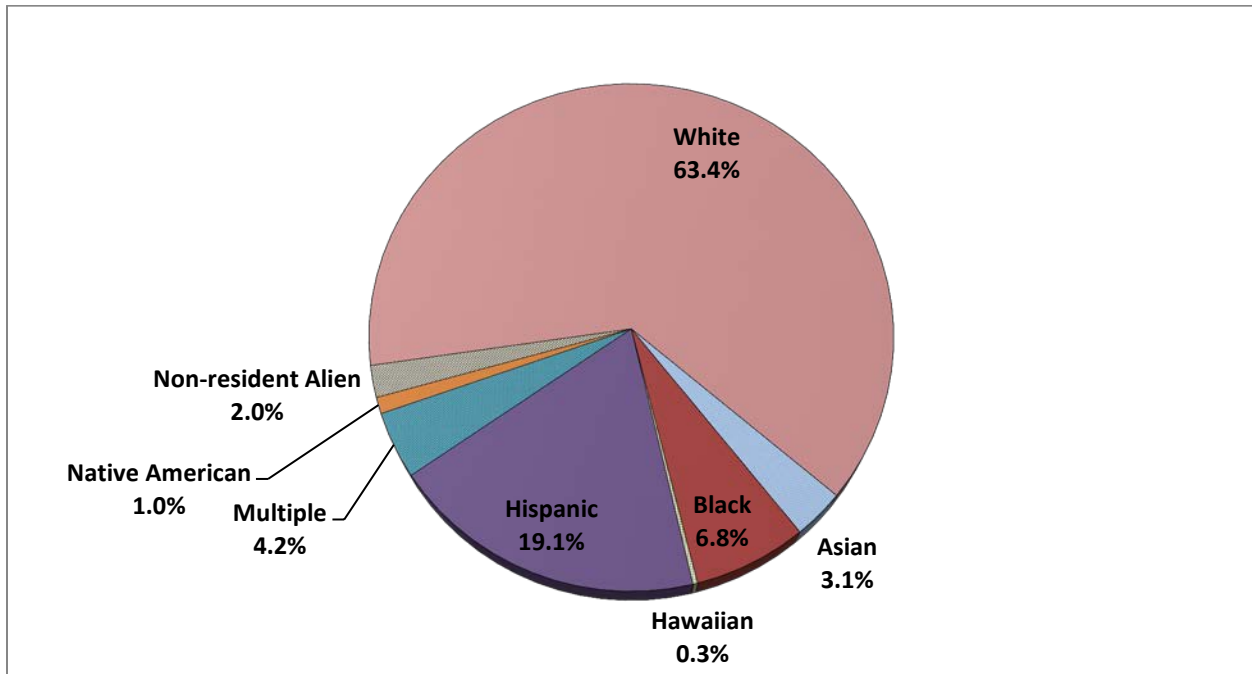
*FT/PT status is based on the number of credit hours a student took during his or her first term in the academic year, with the exception of summer, unless a student was only enrolled in the summer term.



Percentage of Headcount by Ethnicity by College: 2014-15

| College | Asian | Black or African American | Hawaiian or Pacific Islander | Hispanic | More than one Race/ Ethnicity (non-Hispanic) | Native American or Alaska Native | Non-resident Alien | White | Total Minority |
|-------------------|-------------|---------------------------|------------------------------|--------------|--|----------------------------------|--------------------|--------------|----------------|
| ACC | 3.2% | 3.0% | 0.3% | 19.9% | 3.5% | 0.6% | 0.9% | 68.5% | 30.6% |
| CCA | 5.6% | 22.5% | 0.4% | 21.5% | 6.3% | 0.5% | 2.5% | 40.8% | 56.7% |
| CCD | 5.5% | 15.1% | 0.2% | 27.2% | 4.8% | 1.3% | 6.7% | 39.3% | 54.1% |
| CNCC | 0.5% | 2.6% | 0.3% | 10.6% | 3.1% | 1.5% | 0.7% | 80.7% | 18.5% |
| FRCC | 3.5% | 1.8% | 0.2% | 14.2% | 3.7% | 0.7% | 2.0% | 73.8% | 24.2% |
| LCC | 0.2% | 4.2% | 0.1% | 23.2% | 2.4% | 1.1% | 4.2% | 64.7% | 31.2% |
| MCC | 0.6% | 1.9% | 0.1% | 17.7% | 1.4% | 0.3% | 1.1% | 76.8% | 22.1% |
| NJC | 0.4% | 5.8% | 0.1% | 10.3% | 2.8% | 0.7% | 0.5% | 79.4% | 20.1% |
| OJC | 0.8% | 2.9% | 0.3% | 28.8% | 3.2% | 1.3% | 3.3% | 59.4% | 37.3% |
| PCC | 0.7% | 5.6% | 0.2% | 28.7% | 2.7% | 3.1% | 0.7% | 58.3% | 41.1% |
| PPCC | 2.4% | 8.5% | 0.6% | 14.4% | 6.2% | 0.9% | 0.7% | 66.2% | 33.1% |
| RRCC | 2.8% | 1.8% | 0.2% | 14.0% | 3.6% | 0.9% | 1.6% | 75.1% | 23.3% |
| TSJC | 1.1% | 2.2% | 0.1% | 43.2% | 1.8% | 1.5% | 1.3% | 48.7% | 50.0% |
| CCCS Total | 3.1% | 6.8% | 0.3% | 19.1% | 4.2% | 1.0% | 2.0% | 63.4% | 34.6% |

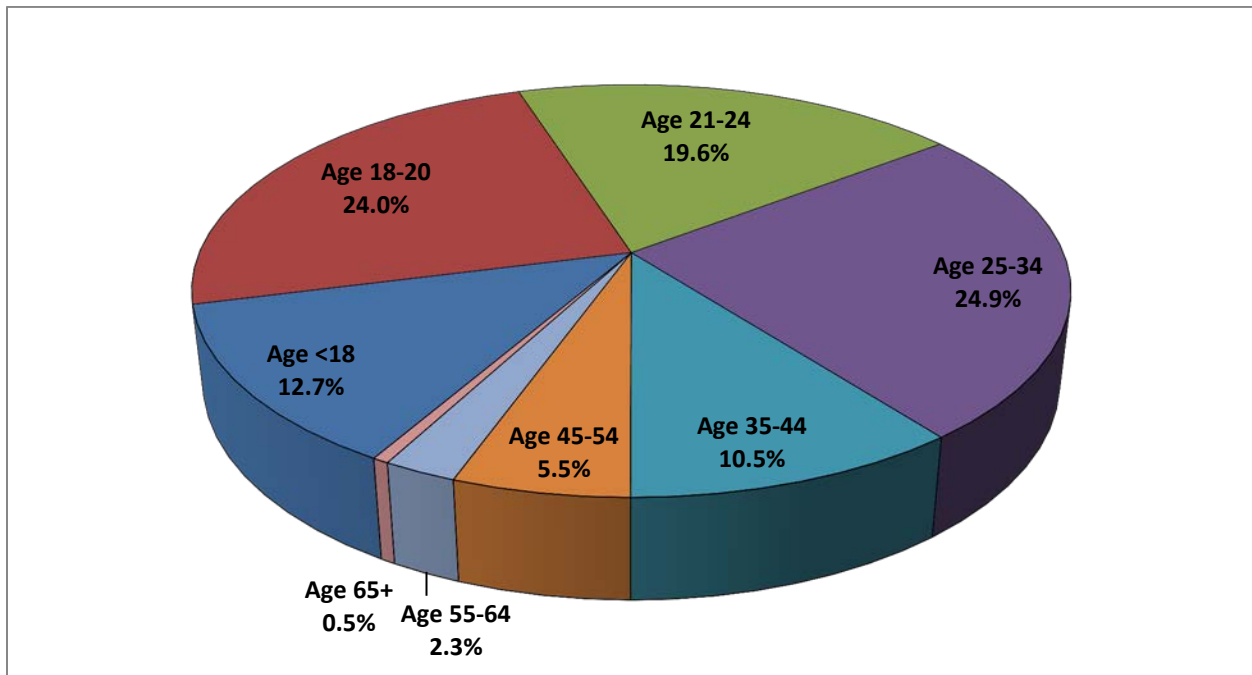
Percentages are based on reported data only; 6.1 percent of students did not report ethnicity. The minority percentage includes students reporting as Asian, black or African American, Hawaiian or Pacific Islander, Hispanic, multiple races, and Native American or Alaska Native.



Percent of Headcount by Age Group by College: 2014-15

| College | <18 | 18-20 | 21-24 | 25-34 | 35-44 | 45-54 | 55-64 | 65+ | Average Age | Median Age |
|-------------------|--------------|--------------|--------------|--------------|--------------|-------------|-------------|-------------|-------------|------------|
| ACC | 16.9% | 20.2% | 15.6% | 24.8% | 13.2% | 6.4% | 2.5% | 0.4% | 27 | 24 |
| CCA | 23.0% | 21.5% | 16.0% | 22.4% | 10.3% | 4.6% | 1.8% | 0.4% | 25 | 22 |
| CCD | 12.4% | 25.2% | 23.1% | 25.6% | 8.2% | 3.7% | 1.5% | 0.3% | 25 | 22 |
| CNCC | 23.0% | 24.8% | 12.2% | 17.8% | 9.5% | 6.6% | 5.2% | 1.0% | 27 | 21 |
| FRCC | 9.2% | 25.8% | 24.4% | 24.9% | 9.3% | 4.5% | 1.6% | 0.3% | 26 | 23 |
| LCC | 25.0% | 42.6% | 12.2% | 11.5% | 4.6% | 2.3% | 1.3% | 0.5% | 22 | 19 |
| MCC | 25.3% | 23.4% | 10.8% | 14.8% | 8.8% | 7.8% | 5.8% | 3.2% | 28 | 21 |
| NJC | 10.7% | 40.3% | 11.2% | 13.5% | 8.9% | 8.8% | 5.3% | 1.4% | 28 | 20 |
| OJC | 23.2% | 30.3% | 13.3% | 12.7% | 7.0% | 6.1% | 3.9% | 3.5% | 27 | 20 |
| PCC | 8.2% | 18.3% | 17.2% | 29.0% | 15.5% | 8.1% | 3.0% | 0.6% | 29 | 26 |
| PPCC | 7.5% | 24.1% | 21.3% | 29.0% | 10.8% | 5.3% | 1.8% | 0.2% | 27 | 24 |
| RRCC | 9.5% | 23.6% | 20.3% | 26.1% | 10.4% | 6.4% | 3.1% | 0.6% | 27 | 24 |
| TSJC | 20.6% | 30.0% | 12.7% | 18.0% | 8.1% | 6.1% | 3.2% | 1.2% | 26 | 20 |
| CCCS Total | 12.7% | 24.0% | 19.6% | 24.9% | 10.5% | 5.5% | 2.3% | 0.5% | 27 | 23 |

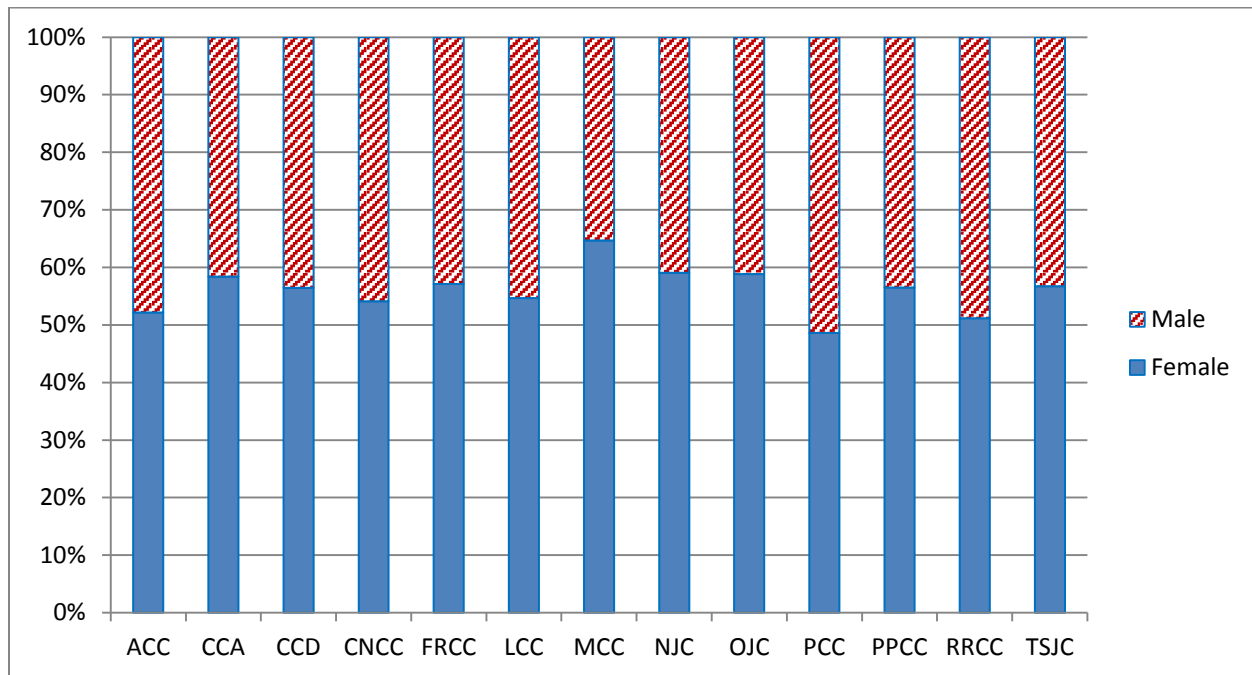
Age is calculated from December 31, 2014. Percentages are based on reported data only. A small number of students, less than 0.01 percent, did not report a birth date.



Headcount by Gender by College: 2014-15

| College | Female Headcount | Female Percentage | Male Headcount | Male Percentage | Total Count |
|-------------------|------------------|-------------------|----------------|-----------------|----------------|
| ACC | 8,982 | 52.2% | 8,229 | 47.8% | 17,211 |
| CCA | 6,621 | 58.4% | 4,723 | 41.6% | 11,344 |
| CCD | 8,455 | 56.4% | 6,530 | 43.6% | 14,985 |
| CNCC | 960 | 54.1% | 814 | 45.9% | 1,774 |
| FRCC | 15,942 | 57.1% | 11,981 | 42.9% | 27,923 |
| LCC | 568 | 54.7% | 471 | 45.3% | 1,039 |
| MCC | 1,550 | 64.7% | 847 | 35.3% | 2,397 |
| NJC | 1,575 | 59.1% | 1,091 | 40.9% | 2,666 |
| OJC | 1,202 | 58.8% | 841 | 41.2% | 2,043 |
| PCC | 4,836 | 48.6% | 5,119 | 51.4% | 9,955 |
| PPCC | 11,263 | 56.5% | 8,675 | 43.5% | 19,938 |
| RRCC | 6,632 | 51.2% | 6,328 | 48.8% | 12,960 |
| TSJC | 1,412 | 56.7% | 1,078 | 43.3% | 2,490 |
| CCCS Total | 69,998 | 55.2% | 56,727 | 44.8% | 126,725 |

Counts are based on reported data only. About 0.2 percent of students did not report gender.

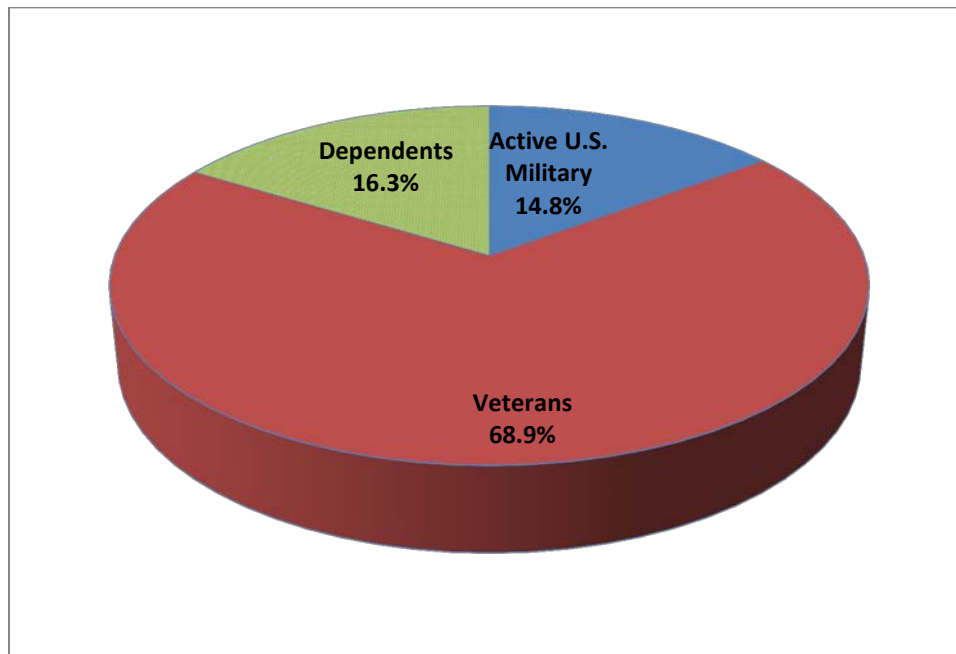


Headcount of Military-related Students: 2014-15

| College | Active U.S. Military* | Veterans | Total Military** | Dependents of Active U.S. Military | Total U.S. Military-related Students | College as Percent of Total CCCS |
|-------------------|-----------------------|--------------|------------------|------------------------------------|--------------------------------------|----------------------------------|
| ACC | 36 | 503 | 539 | 7 | 546 | 5.8% |
| CCA | 72 | 438 | 510 | 33 | 543 | 5.8% |
| CCD | 27 | 429 | 456 | 5 | 461 | 4.9% |
| CNCC | 3 | 49 | 52 | 0 | 52 | 0.6% |
| FRCC | 61 | 1,069 | 1,130 | 3 | 1,133 | 12.0% |
| LCC | 1 | 24 | 25 | 0 | 25 | 0.3% |
| MCC | 3 | 28 | 31 | 0 | 31 | 0.3% |
| NJC | 7 | 18 | 25 | 0 | 25 | 0.3% |
| OJC | 2 | 59 | 61 | 0 | 61 | 0.6% |
| PCC | 20 | 402 | 422 | 34 | 456 | 4.8% |
| PPCC | 1,134 | 2,742 | 3,876 | 1,457 | 5,333 | 56.5% |
| RRCC | 29 | 670 | 699 | 0 | 699 | 7.4% |
| TSJC | 3 | 70 | 73 | 0 | 73 | 0.8% |
| CCCS Total | 1,398 | 6,501 | 7,899 | 1,539 | 9,438 | 100.0% |

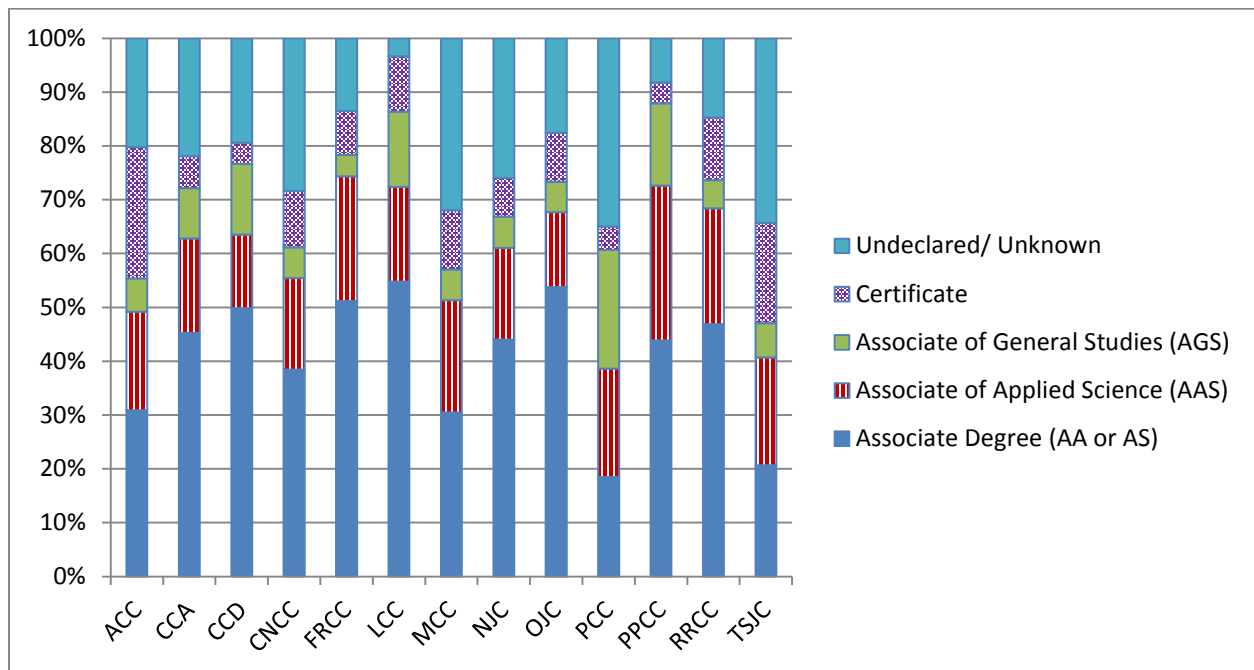
* The active U.S. military column includes a small number (4) of U.S. military reserves and National Guard.

** In the course of an academic year, a student could be in multiple categories; for example, an active member of the military in one semester and a veteran in another. The hierarchical order in this chart gives precedence to active military.



Headcount by Degree-Seeking Type by College: 2014-15

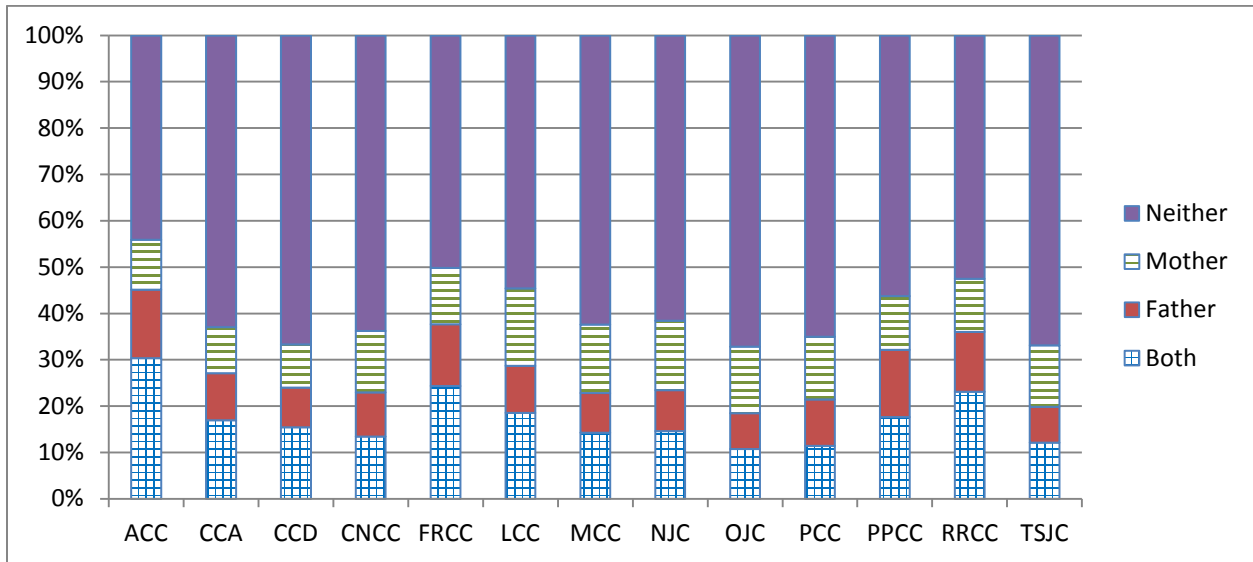
| College | Associate of Arts (AA) | Associate of Science (AS) | Associate of Applied Science (AAS) | Associate of General Studies (AGS) | Certificate | Undeclared/Unknown | Total |
|---------------|------------------------|---------------------------|------------------------------------|------------------------------------|---------------|--------------------|----------------|
| ACC | 2,742 | 2,629 | 3,187 | 1,082 | 4,238 | 3,525 | 17,403 |
| CCA | 2,453 | 2,687 | 1,990 | 1,063 | 675 | 2,487 | 11,355 |
| CCD | 3,717 | 3,754 | 2,050 | 1,969 | 589 | 2,909 | 14,988 |
| CNCC | 467 | 220 | 303 | 102 | 187 | 507 | 1,786 |
| FRCC | 8,129 | 6,157 | 6,482 | 1,114 | 2,267 | 3,776 | 27,925 |
| LCC | 325 | 245 | 183 | 145 | 107 | 35 | 1,040 |
| MCC | 411 | 321 | 501 | 138 | 263 | 768 | 2,402 |
| NJC | 758 | 417 | 454 | 155 | 191 | 693 | 2,668 |
| OJC | 692 | 407 | 284 | 115 | 186 | 359 | 2,043 |
| PCC | 1,043 | 794 | 2,007 | 2,201 | 431 | 3,484 | 9,960 |
| PPCC | 4,927 | 3,812 | 5,747 | 3,038 | 772 | 1,643 | 19,939 |
| RRCC | 2,827 | 3,251 | 2,793 | 676 | 1,509 | 1,908 | 12,964 |
| TSJC | 321 | 194 | 498 | 159 | 463 | 855 | 2,490 |
| CCCS | 28,812 | 24,888 | 26,479 | 11,957 | 11,878 | 22,949 | 126,963 |
| CCCS % | 22.7% | 19.6% | 20.9% | 9.4% | 9.4% | 18.1% | 100.0% |



Parental Education Level
Students' Parents Who Earned a Four-Year Degree, 2014-15

| College | Both | Father | Mother | Neither |
|-------------------|--------------|--------------|--------------|--------------|
| ACC | 30.3% | 14.8% | 10.8% | 44.1% |
| CCA | 17.0% | 10.1% | 10.0% | 62.9% |
| CCD | 15.4% | 8.6% | 9.3% | 66.7% |
| CNCC | 13.4% | 9.5% | 13.2% | 63.8% |
| FRCC | 24.4% | 13.3% | 12.2% | 50.2% |
| LCC | 18.6% | 10.1% | 16.7% | 54.6% |
| MCC | 14.3% | 8.5% | 14.8% | 62.4% |
| NJC | 14.6% | 8.8% | 15.0% | 61.5% |
| OJC | 10.8% | 7.7% | 14.3% | 67.2% |
| PCC | 11.4% | 10.0% | 13.5% | 65.0% |
| PPCC | 17.7% | 14.5% | 11.6% | 56.2% |
| RRCC | 23.1% | 12.9% | 11.5% | 52.5% |
| TSJC | 12.1% | 7.7% | 13.3% | 66.8% |
| CCCS Total | 20.3% | 12.1% | 11.6% | 56.0% |

Source: Banner. Based on students who reported. About 3.5 percent of students did not report.

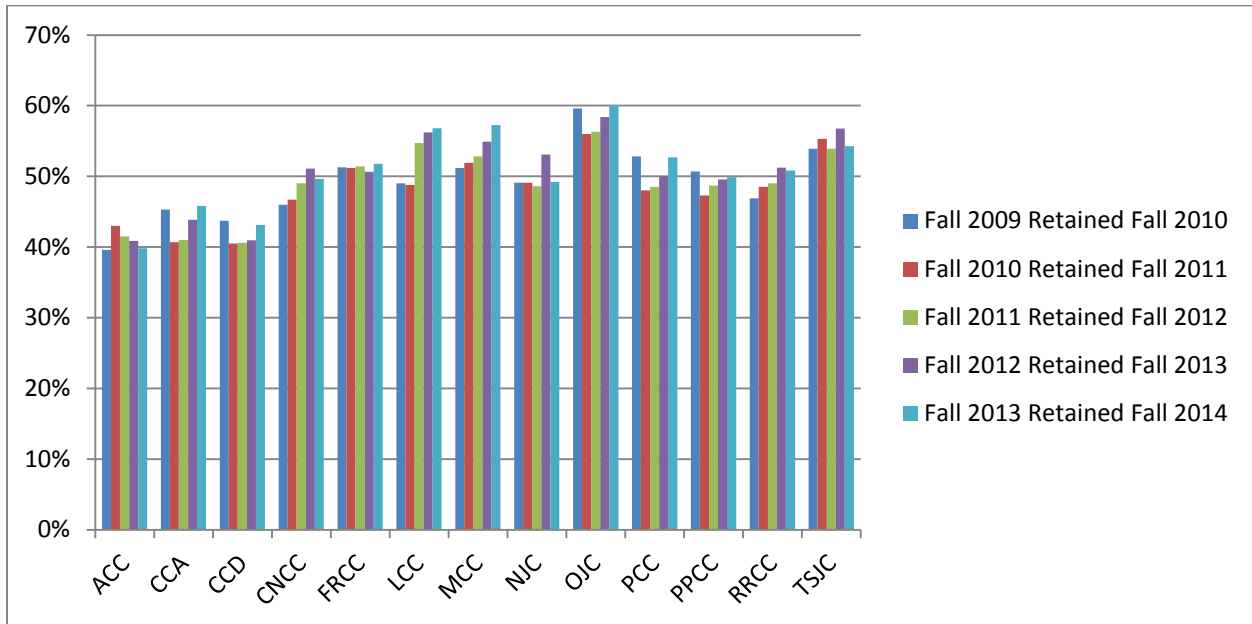


Retention

Fall-to-Fall Full- and Part-Time Retention Trends by College Fall 2010 to Fall 2014

| College | Fall 2009 Retained Fall 2010 | Fall 2010 Retained Fall 2011 | Fall 2011 Retained Fall 2012 | Fall 2012 Retained Fall 2013 | Fall 2013 Retained Fall 2014 |
|-------------------|------------------------------|------------------------------|------------------------------|------------------------------|------------------------------|
| ACC | 39.6% | 43.0% | 41.5% | 40.9% | 39.8% |
| CCA | 45.3% | 40.7% | 41.0% | 43.8% | 45.8% |
| CCD | 43.7% | 40.5% | 40.6% | 41.0% | 43.1% |
| CNCC | 46.0% | 46.7% | 49.0% | 51.1% | 49.6% |
| FRCC | 51.3% | 51.2% | 51.4% | 50.7% | 51.8% |
| LCC | 49.0% | 48.8% | 54.7% | 56.2% | 56.8% |
| MCC | 51.2% | 51.9% | 52.8% | 54.9% | 57.3% |
| NJC | 49.1% | 49.1% | 48.6% | 53.1% | 49.2% |
| OJC | 59.6% | 56.0% | 56.3% | 58.4% | 60.1% |
| PCC | 52.8% | 48.0% | 48.5% | 50.0% | 52.7% |
| PPCC | 50.7% | 47.3% | 48.7% | 49.5% | 49.9% |
| RRCC | 46.9% | 48.5% | 49.0% | 51.2% | 50.8% |
| TSJC | 53.9% | 55.3% | 53.9% | 56.8% | 54.3% |
| CCCS Total | 48.1% | 46.9% | 47.1% | 47.8% | 48.6% |

Note: Fall to fall retention of all students adjusted for graduations and awards.

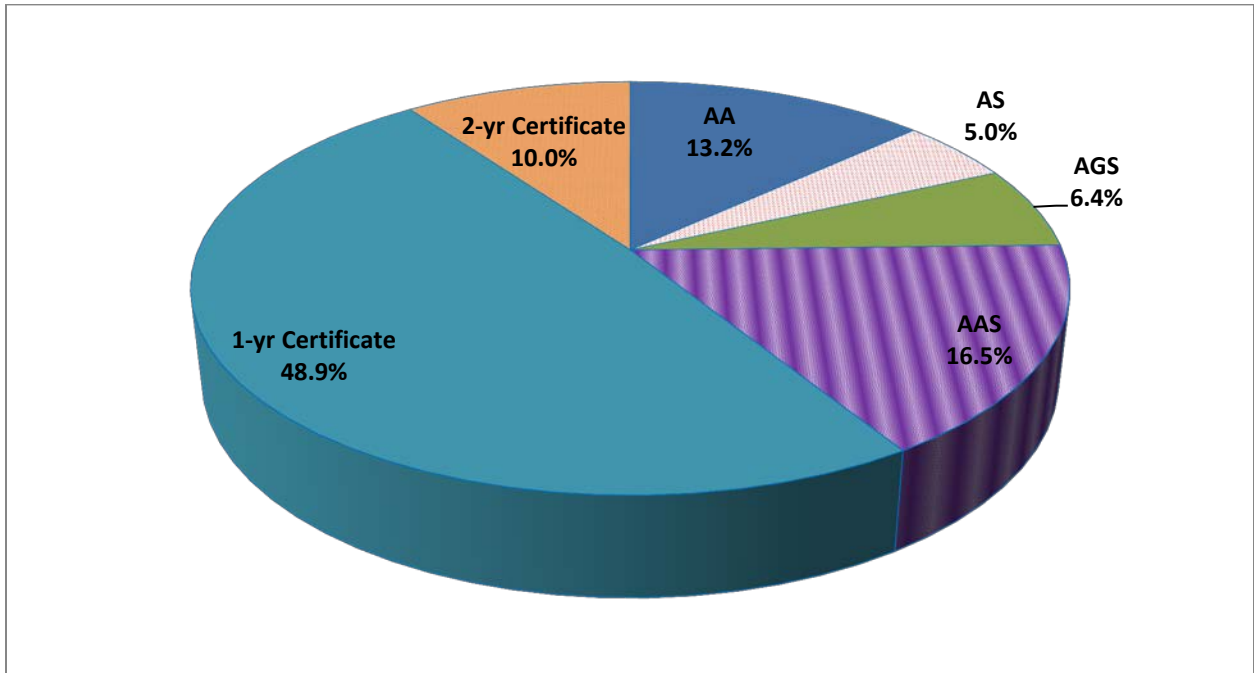


Degrees

Degrees Awarded by Type of Award: 2014-15

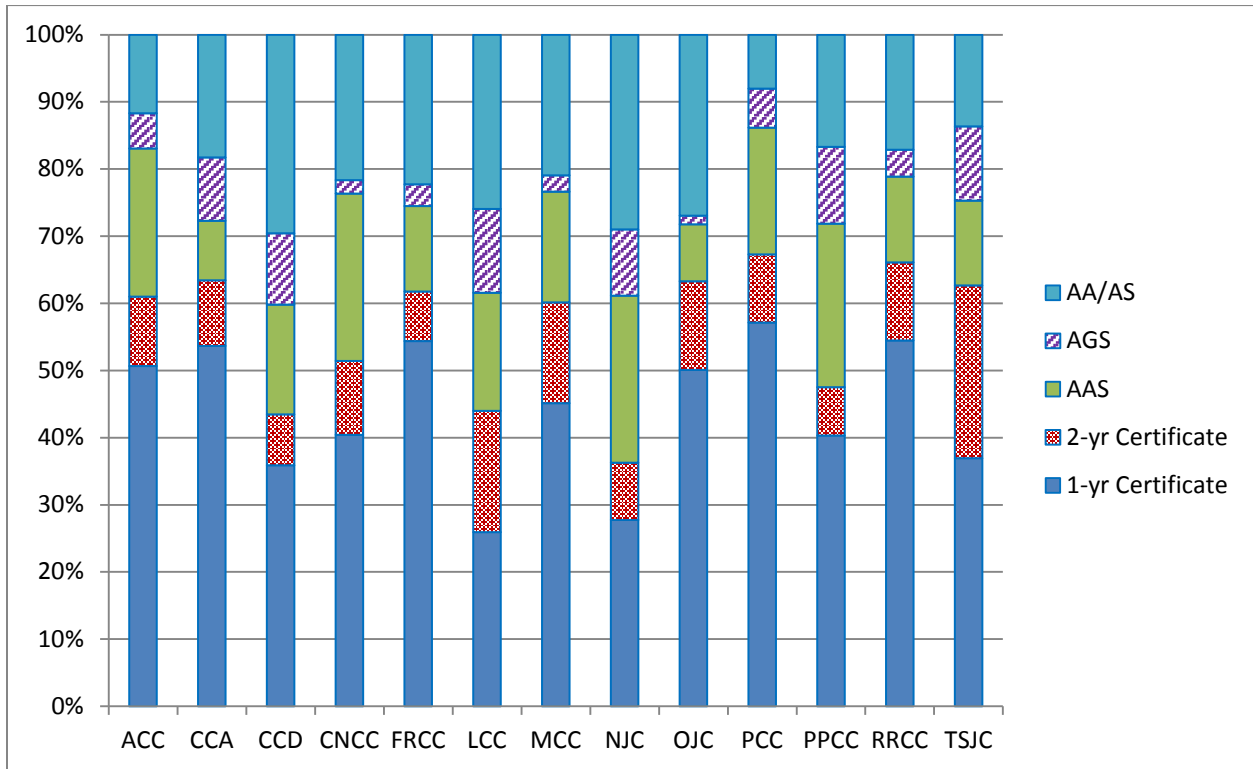
| Degree Awarded | Number | Percent of Total | Number Change from AY 2013-14 | Percent Change from AY 2013-14 |
|-------------------|---------------|------------------|-------------------------------|--------------------------------|
| AA | 2,388 | 13.2% | 18 | 0.8% |
| AS | 897 | 5.0% | 47 | 5.5% |
| AGS | 1,162 | 6.4% | 7 | 0.6% |
| AAS | 2,978 | 16.5% | 118 | 4.1% |
| 1-yr Certificate | 8,846 | 48.9% | 733 | 9.0% |
| 2-yr Certificate | 1,803 | 10.0% | 52 | 3.0% |
| CCCS Total | 18,074 | 100.0% | 975 | 5.7% |

Generally, Associate of Arts (AA), Associate of Science (AS), and Associate of General Studies (AGS) degrees are transfer-oriented awards, while the Associate of Applied Science (AAS) degree is considered to be a professionally oriented terminal award.



Degrees Awarded by College: 2014-15

| College | 1-Year Certificate | 2-Year Certificate | AAS | AGS | AA | AS | Total Awards | % of CCCS Awards |
|-------------------|--------------------|--------------------|--------------|-------------|--------------|-------------|---------------|------------------|
| ACC | 50.6% | 10.4% | 22.0% | 5.2% | 8.8% | 2.9% | 1,801 | 10.0% |
| CCA | 53.7% | 9.7% | 8.9% | 9.4% | 11.6% | 6.7% | 1,304 | 7.2% |
| CCD | 35.9% | 7.5% | 16.4% | 10.6% | 18.3% | 11.3% | 1,100 | 6.1% |
| CNCC | 40.4% | 11.0% | 24.9% | 2.0% | 14.7% | 6.9% | 245 | 1.4% |
| FRCC | 54.4% | 7.4% | 12.7% | 3.3% | 17.0% | 5.3% | 4,522 | 25.0% |
| LCC | 25.9% | 18.1% | 17.6% | 12.5% | 15.7% | 10.2% | 216 | 1.2% |
| MCC | 45.2% | 15.0% | 16.5% | 2.4% | 15.9% | 5.1% | 454 | 2.5% |
| NJC | 27.7% | 8.5% | 24.9% | 9.8% | 18.9% | 10.1% | 386 | 2.1% |
| OJC | 50.1% | 13.2% | 8.5% | 1.3% | 16.1% | 10.8% | 471 | 2.6% |
| PCC | 57.2% | 10.1% | 18.8% | 5.8% | 6.4% | 1.6% | 2,171 | 12.0% |
| PPCC | 40.3% | 7.2% | 24.3% | 11.5% | 13.1% | 3.6% | 2,619 | 14.5% |
| RRCC | 54.5% | 11.7% | 12.8% | 4.0% | 12.8% | 4.4% | 2,000 | 11.1% |
| TSJC | 36.9% | 25.7% | 12.6% | 11.1% | 9.9% | 3.7% | 785 | 4.3% |
| Total CCCS | 48.9% | 10.0% | 16.5% | 6.4% | 13.2% | 5.0% | 18,074 | 100.0% |



Top Degree Program by College: 2014-15

| College | Program Name* | Number of Awards | % of College Awards |
|---------|--|------------------|---------------------|
| ACC | Child Care Provider/Assistant | 186 | 12.4% |
| CCA | Cinematography and Film/Video Production | 370 | 39.2% |
| CCD | Early Childhood Education and Teaching | 126 | 19.1% |
| CNCC | Nursing Assistant/Aide and Patient Care Assistant/Aide | 37 | 19.8% |
| FRCC | Welding Technology/Welder | 404 | 12.0% |
| LCC | Registered Nursing/Registered Nurse | 38 | 28.6% |
| MCC | Nursing Assistant/Aide and Patient Care Assistant/Aide | 73 | 21.0% |
| NJC | Business Administration and Management, General | 64 | 27.1% |
| OJC | Automobile/Automotive Mechanics Technology/Technician | 64 | 18.9% |
| PCC | Business/Office Automation/Technology/Data Entry | 353 | 18.9% |
| PPCC | Registered Nursing/Registered Nurse | 516 | 27.4% |
| RRCC | Business Administration and Management, General | 149 | 9.4% |
| TSJC | Nursing Assistant/Aide and Patient Care Assistant/Aide | 103 | 17.4% |

* Excludes AA, AS, and AGS degrees

Top Degree Programs for CCCS by Type of Degree: 2014-15

| Program Name* | Number of Awards | % of CCCS Total |
|---|------------------|-----------------|
| AAS Degrees | | |
| Registered Nursing/Registered Nurse | 531 | 17.8% |
| Accounting Technology/Technician and Bookkeeping | 143 | 4.8% |
| Radiologic Technology/Science - Radiographer | 96 | 3.2% |
| Automobile/Automotive Mechanics Technology/Technician | 95 | 3.2% |
| Cooking and Related Culinary Arts, General | 91 | 3.1% |
| Legal Assistant/Paralegal | 91 | 3.1% |
| Total of Top Five | 1,047 | 35.2% |
| Two-Year Certificates | | |
| Criminal Justice/Police Science | 226 | 12.5% |
| Early Childhood Education and Teaching | 170 | 9.4% |
| Cosmetology/Cosmetologist, General | 144 | 8.0% |
| Licensed Practical/Vocational Nurse Training | 127 | 7.0% |
| Legal Assistant/Paralegal | 110 | 6.1% |
| Total of Top Five | 777 | 43.1% |
| One-Year Certificates | | |
| Nursing Assistant/Aide and Patient Care Assistant/Aide | 1,106 | 12.5% |
| Emergency Medical Technology/Technician (EMT Paramedic) | 980 | 11.1% |
| Automobile/Automotive Mechanics Technology/Technician | 550 | 6.2% |
| Welding Technology/Welder | 544 | 6.1% |
| Business Administration and Management, General | 516 | 5.8% |
| Total of Top Five | 3,696 | 41.8% |

* Excludes AA, AS, and AGS degrees

Degrees with Designation Awarded: 2012-13 through 2014-15

| Degree with Designation* | 2012-13 | 2013-14 | 2014-15 | 2014-15 % of Total |
|---------------------------------|----------------|----------------|----------------|-------------------------------|
| Agricultural Business (AS) | | | 3 | 0.4% |
| Animal Science (AS) | | 1 | 2 | 0.3% |
| Anthropology (AA) | 4 | 7 | 11 | 1.5% |
| Business (AA) | 352 | 344 | 339 | 46.1% |
| Communication (AA) | | | 1 | 0.1% |
| Criminal Justice (AA) | | 12 | 52 | 7.1% |
| Early Childhood Education (AA) | 45 | 36 | 41 | 5.6% |
| Economics (AA) | 4 | 12 | 10 | 1.4% |
| Elementary Education (AA) | 87 | 69 | 60 | 8.2% |
| Engineering (AS)** | 9 | 6 | | 0.0% |
| French (AA) | 1 | 1 | 4 | 0.5% |
| History (AA) | 36 | 28 | 29 | 3.9% |
| Mathematics (AS) | 6 | 12 | 14 | 1.9% |
| Political Science (AA) | 3 | 7 | 17 | 2.3% |
| Psychology (AA) | 76 | 110 | 121 | 16.4% |
| Psychology (AS) | 5 | 8 | 8 | 1.1% |
| Sociology (AA) | 3 | 13 | 13 | 1.8% |
| Soil & Crop Science (AS) | | | 1 | 0.1% |
| Spanish (AA) | 1 | 13 | 10 | 1.4% |
| Total | 632 | 679 | 736 | 100.0% |

*Includes degrees with designation and, in some years, statewide transfer agreements.

**Engineering is no longer a statewide transfer agreement.

Transfers

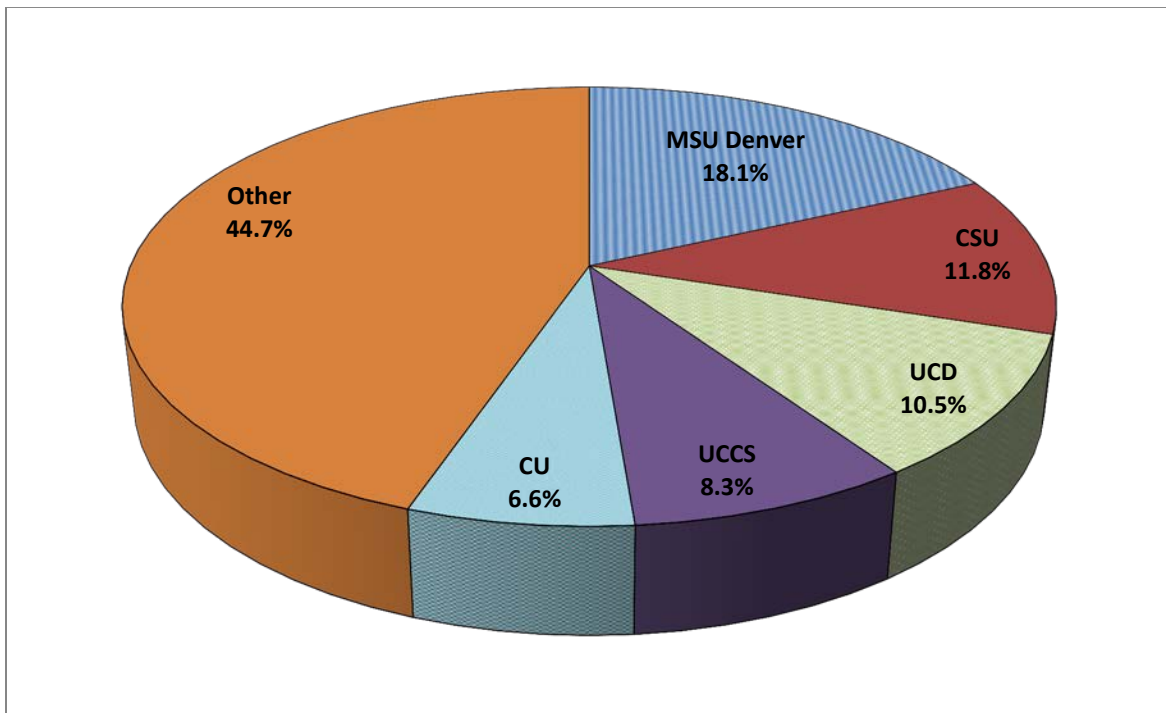
Total Number of Student Transfers and Top Transfer Destinations Academic Years 2012-13 through 2014-15

| College | 2012-2013 Total Transfers to Four- Year Institutions | 2012-2013 Top Transfer Destination | 2013-2014 Total Transfers to Four- Year Institutions | 2013-2014 Top Transfer Destination | 2014-2015 Total Transfers to Four- Year Institutions | 2014-2015 Top Transfer Destination |
|-------------------|---|--|---|--|---|--|
| ACC | 1,532 | MSU Denver | 1,496 | MSU Denver | 1,611 | MSU Denver |
| CCA | 965 | MSU Denver | 1,051 | UCD | 1,063 | MSU Denver |
| CCD | 2,050 | MSU Denver | 1,662 | MSU Denver | 1,566 | MSU Denver |
| CNCC | 172 | CMU | 186 | CMU | 180 | CMU |
| FRCC | 2,805 | CSU - Ft Collins | 2,704 | CSU - Ft Collins | 2,589 | CSU - Ft Collins |
| LCC | 120 | CSU - Pueblo | 143 | UCCS | 130 | Adams State U |
| MCC | 253 | UNC | 257 | UNC | 252 | CSU - Ft Collins |
| NJC | 267 | CSU/UNC | 248 | UNC | 272 | CSU - Ft Collins |
| OJC | 184 | CSU - Pueblo | 147 | CSU - Pueblo | 162 | CSU - Pueblo |
| PCC | 484 | CSU - Pueblo | 471 | CSU - Pueblo | 465 | CSU - Pueblo |
| PPCC | 1,444 | UCCS | 1,488 | UCCS | 1,524 | UCCS |
| RRCC | 1,053 | MSU Denver | 1,050 | MSU Denver | 984 | MSU Denver |
| TSJC | 195 | Adams State U | 242 | Adams State U | 251 | Adams State U |
| CCCS Total | 11,524 | MSU Denver | 11,145 | MSU Denver | 11,049 | MSU Denver |

*Transfer data based on attendance at a four-year college – public or private – in the following fall, as reported by the National Student Clearinghouse (NSC). Not all institutions participate in the NSC.

**Top Five Four-Year Transfer Destinations
From Fall 2014 to Fall 2015**

| Transfer Destination | Transfers | % of Total Transfers to Four-Year Institutions |
|--|------------------|---|
| Metropolitan State University of Denver (MSU Denver) | 2,007 | 18.1% |
| Colorado State University - Fort Collins (CSU) | 1,311 | 11.8% |
| University of Colorado - Denver (UCD) | 1,163 | 10.5% |
| University of Colorado - Colorado Springs (UCCS) | 918 | 8.3% |
| University of Colorado - Boulder (CU) | 730 | 6.6% |
| Total of Top Five Destinations | 6,129 | 55.3% |



Transfers to Colorado Four-Year Institutions: Fall 2014 to Fall 2015

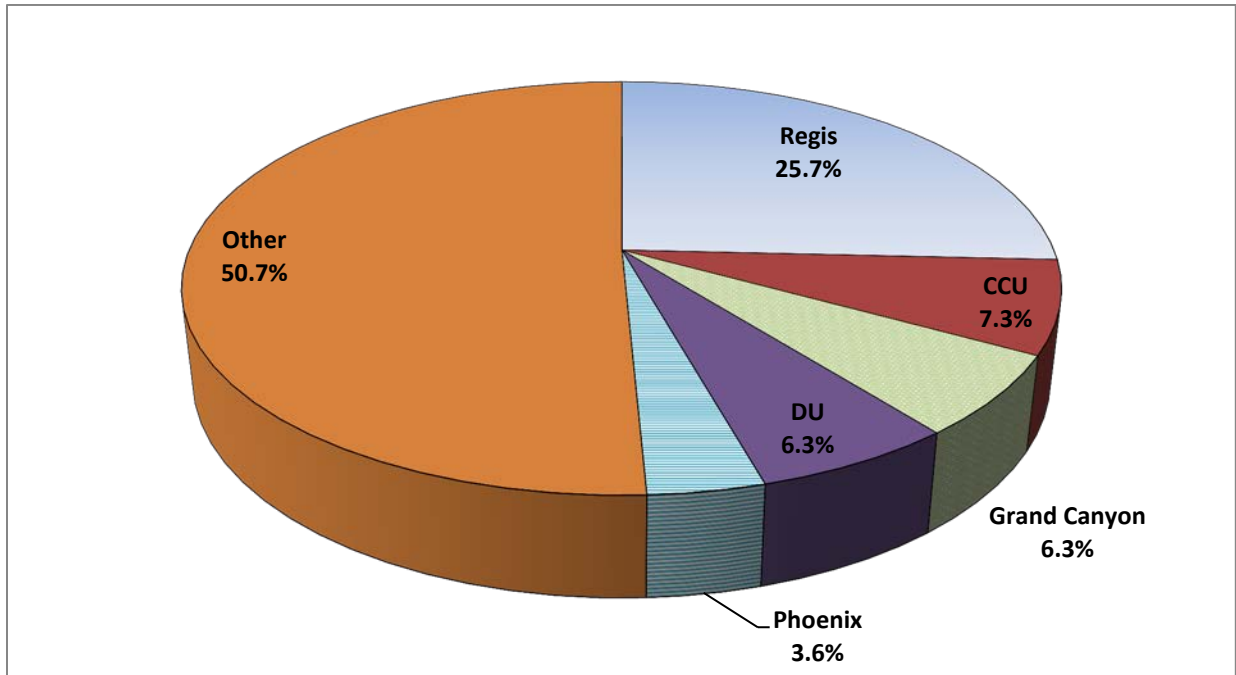
| College | Number of Transfers | Rank |
|---|----------------------------|-------------|
| Adams State University | 221 | 9 |
| College America - Colorado Springs | 3 | 26 |
| College America - Denver | 1 | 28 |
| Colorado Christian University | 136 | 12 |
| Colorado College | 7 | 22 |
| Colorado Mesa University | 218 | 10 |
| Colorado Mountain College | 96 | 14 |
| Colorado School of Mines | 215 | 11 |
| Colorado State University - Fort Collins | 1,311 | 2 |
| Colorado State University - Global Campus | 7 | 22 |
| Colorado State University - Pueblo | 472 | 8 |
| Colorado Technical University | 31 | 17 |
| Colorado Technical University - Denver | 10 | 21 |
| Colorado Technical University - Online | 24 | 19 |
| Denver Seminary | 2 | 27 |
| Fort Lewis College | 85 | 15 |
| Iliff School of Theology | 1 | 28 |
| Johnson & Wales- Denver | 30 | 18 |
| Metropolitan State University of Denver | 2,007 | 1 |
| Naropa University | 14 | 20 |
| Regis University | 482 | 7 |
| Rocky Mountain College of Art & Design | 7 | 22 |
| The Art Institute of Colorado | 5 | 25 |
| University of Colorado - Boulder | 730 | 5 |
| University of Colorado - Colorado Springs | 918 | 4 |
| University of Colorado - Denver | 1,163 | 3 |
| University of Denver | 118 | 13 |
| University of Northern Colorado | 548 | 6 |
| Western State Colorado University | 83 | 16 |
| Total Transfers to Colleges in Colorado* | 8,945 | N/A |

*The total may not sum to the number of students transferring to a Colorado college because NSC may report multiple transfer colleges for an individual student.

Colleges and universities enrolling about 98 percent of students in higher education institutions participate in the National Student Clearinghouse. In Colorado, the institutions with 1,000 or more students that do not report attendance and completion data to the Clearinghouse are American Sentinel University, Westwood College Denver North, Heritage College – Denver, and Concorde Career Institute – Denver.

**Top Five Four-Year Private Transfer Destinations
From Fall 2014 to Fall 2015**

| Private Transfer Destination | Transfers | % of Total Transfers to Private Four-Year Institutions |
|--|------------------|---|
| Regis University | 482 | 25.7% |
| Colorado Christian University (CCU) | 136 | 7.3% |
| Grand Canyon University | 118 | 6.3% |
| University of Denver (DU) | 118 | 6.3% |
| University of Phoenix | 68 | 3.6% |
| Total of Top Five Private Destinations | 922 | 49.3% |
| Total Transfers to Four-Year Private Colleges | 1,872 | N/A |

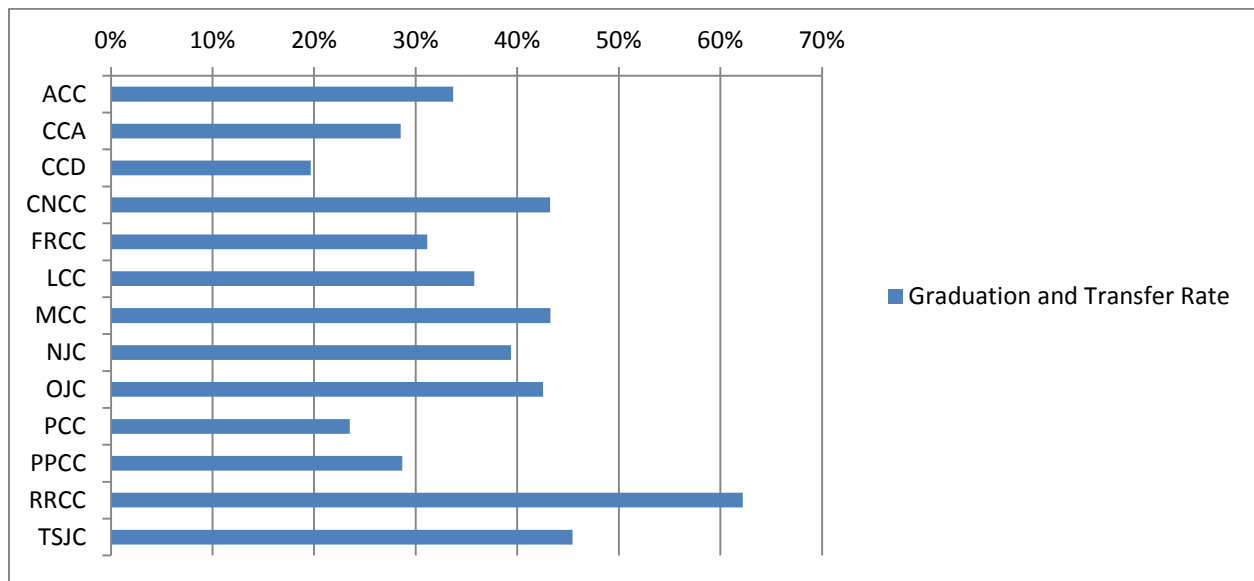


Graduation and Graduation/Transfer Rates
Three-Year Graduation and Transfer Rate
First-time, Full-time, Degree/Certificate-seeking Students
Fall 2011 Cohort Graduating in 2014

| College | 2011 Cohort | Graduates | Graduation Rate | Transfers | Transfer Rate | Combined Graduation Transfer Rate |
|-------------------|--------------|--------------|-----------------|------------|---------------|-----------------------------------|
| ACC | 466 | 86 | 18.5% | 71 | 15.2% | 33.7% |
| CCA | 452 | 83 | 18.4% | 46 | 10.2% | 28.5% |
| CCD | 635 | 64 | 10.1% | 61 | 9.6% | 19.7% |
| CNCC | 148 | 45 | 30.4% | 19 | 12.8% | 43.2% |
| FRCC | 1,362 | 266 | 19.5% | 158 | 11.6% | 31.1% |
| LCC | 151 | 49 | 32.5% | 5 | 3.3% | 35.8% |
| MCC | 67 | 19 | 28.4% | 10 | 14.9% | 43.3% |
| NJC | 401 | 119 | 29.7% | 39 | 9.7% | 39.4% |
| OJC | 228 | 81 | 35.5% | 16 | 7.0% | 42.5% |
| PCC | 459 | 89 | 19.4% | 19 | 4.1% | 23.5% |
| PPCC | 1,154 | 139 | 12.0% | 192 | 16.6% | 28.7% |
| RRCC | 648 | 170 | 26.2% | 233 | 36.0% | 62.2% |
| TSJC | 297 | 120 | 40.4% | 15 | 5.1% | 45.5% |
| CCCS Total | 6,468 | 1,330 | 20.6% | 884 | 13.7% | 34.2% |

* Three-year graduation rate refers to completion of program within 150 percent of normal time.

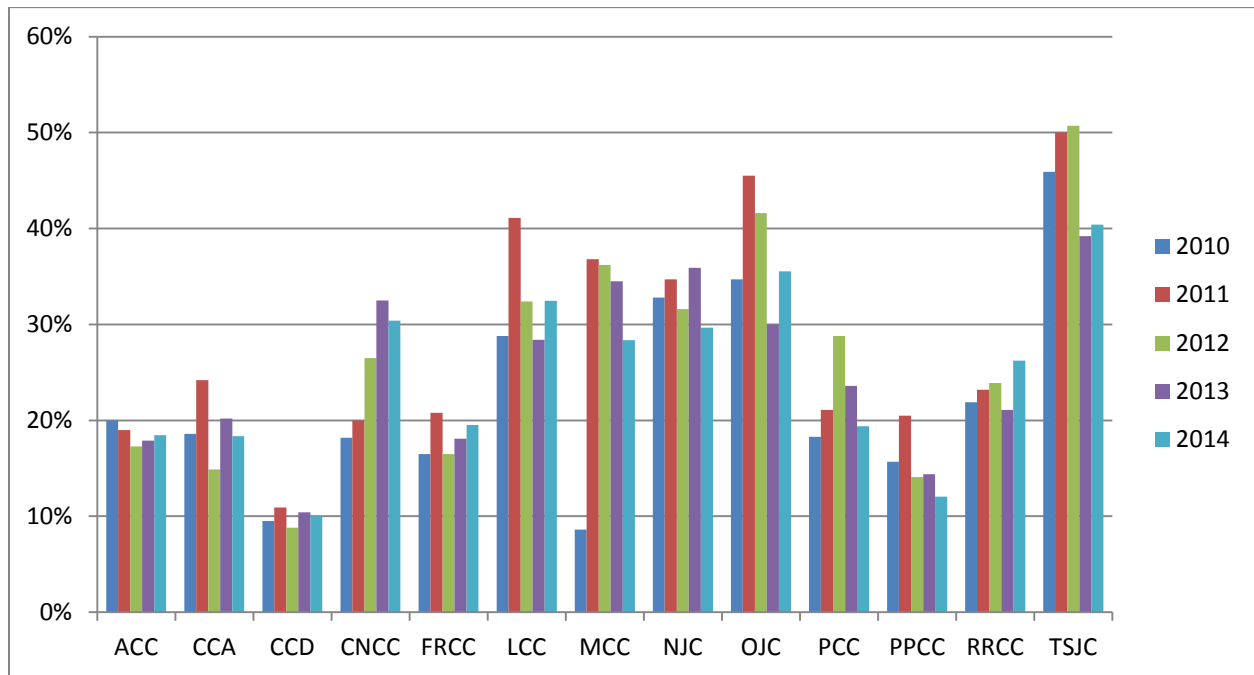
Source: IPEDS



Three-Year Graduation Rate Trends
Full-time, First-time, Degree/Certificate-seeking Students
2007 Cohort through 2011 Cohort

| College | 2007 Cohort Graduate by Summer 2010 | 2008 Cohort Graduate by Summer 2011 | 2009 Cohort Graduate by Summer 2012 | 2010 Cohort Graduate by Summer 2013 | 2011 Cohort Graduate by Summer 2014 | 2011 Cohort as % of Fall 2011 Headcount |
|-------------|-------------------------------------|-------------------------------------|-------------------------------------|-------------------------------------|-------------------------------------|---|
| ACC | 20.0% | 19.0% | 17.3% | 17.9% | 18.5% | 4.2% |
| CCA | 18.6% | 24.2% | 14.9% | 20.2% | 18.4% | 5.8% |
| CCD | 9.5% | 10.9% | 8.8% | 10.4% | 10.1% | 4.9% |
| CNCC | 18.2% | 20.0% | 26.5% | 32.5% | 30.4% | 11.4% |
| FRCC | 16.5% | 20.8% | 16.5% | 18.1% | 19.5% | 6.6% |
| LCC | 28.8% | 41.1% | 32.4% | 28.4% | 32.5% | 16.1% |
| MCC | 8.6% | 36.8% | 36.2% | 34.5% | 28.4% | 3.6% |
| NJC | 32.8% | 34.7% | 31.6% | 35.9% | 29.7% | 18.6% |
| OJC | 34.7% | 45.5% | 41.6% | 30.0% | 35.5% | 14.7% |
| PCC | 18.3% | 21.1% | 28.8% | 23.6% | 19.4% | 5.7% |
| PPCC | 15.7% | 20.5% | 14.1% | 14.4% | 12.0% | 7.8% |
| RRCC | 21.9% | 23.2% | 23.9% | 21.1% | 26.2% | 6.8% |
| TSJC | 45.9% | 50.0% | 50.7% | 39.2% | 40.4% | 16.2% |
| CCCS | 20.3% | 24.6% | 21.2% | 20.4% | 20.6% | 6.8% |

Source: IPEDS

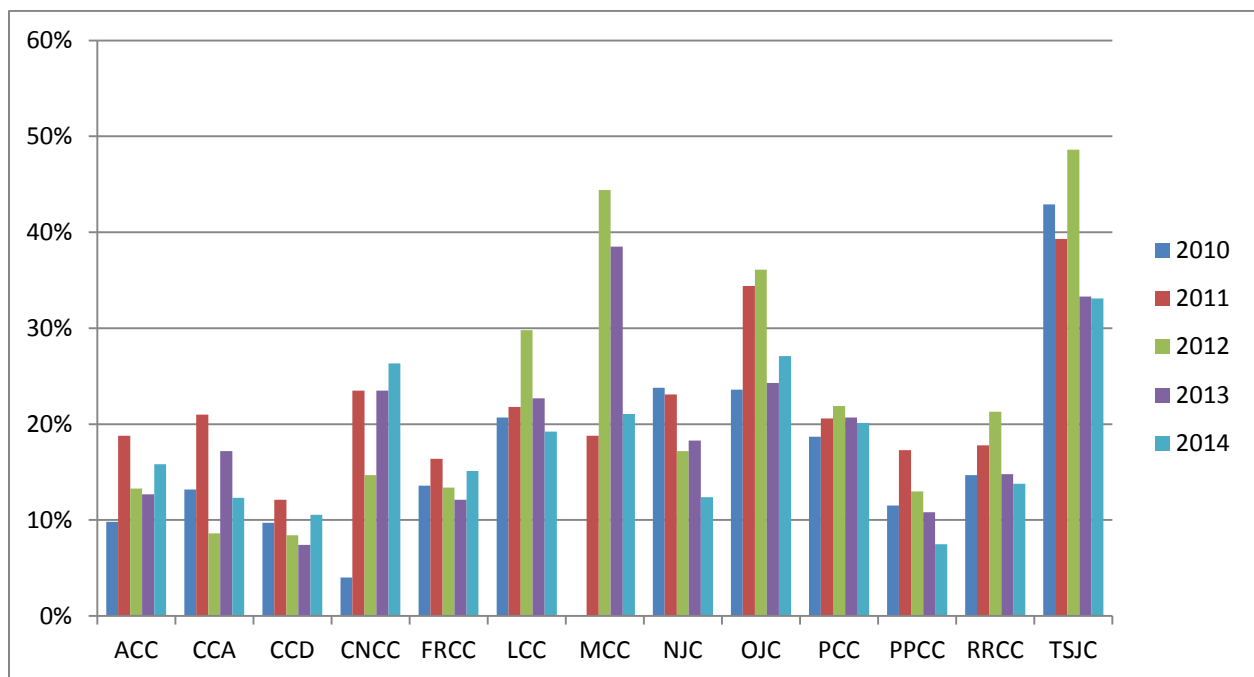


**Three-year Graduation Rate Trends: Minority Students
2007 Cohort through 2011 Cohort**

| College | 2007 Cohort Graduate by Summer 2010 | 2008 Cohort Graduate by Summer 2011 | 2009 Cohort Graduate by Summer 2012 | 2010 Cohort Graduate by Summer 2013 | 2011 Cohort Graduate by Summer 2014 |
|-------------------|-------------------------------------|-------------------------------------|-------------------------------------|-------------------------------------|-------------------------------------|
| ACC | 9.8% | 18.8% | 13.3% | 12.7% | 15.8% |
| CCA | 13.2% | 21.0% | 8.6% | 17.2% | 12.3% |
| CCD | 9.7% | 12.1% | 8.4% | 7.4% | 10.5% |
| CNCC | 4.0% | 23.5% | 14.7% | 23.5% | 26.3% |
| FRCC | 13.6% | 16.4% | 13.4% | 12.1% | 15.1% |
| LCC | 20.7% | 21.8% | 29.8% | 22.7% | 19.2% |
| MCC | 0.0% | 18.8% | 44.4% | 38.5% | 21.1% |
| NJC | 23.8% | 23.1% | 17.2% | 18.3% | 12.4% |
| OJC | 23.6% | 34.4% | 36.1% | 24.3% | 27.1% |
| PCC | 18.7% | 20.6% | 21.9% | 20.7% | 20.1% |
| PPCC | 11.5% | 17.3% | 13.0% | 10.8% | 7.5% |
| RRCC | 14.7% | 17.8% | 21.3% | 14.8% | 13.8% |
| TSJC | 42.9% | 39.3% | 48.6% | 33.3% | 33.1% |
| CCCS Total | 16.1% | 20.4% | 18.5% | 15.3% | 15.1% |

Source: IPEDS

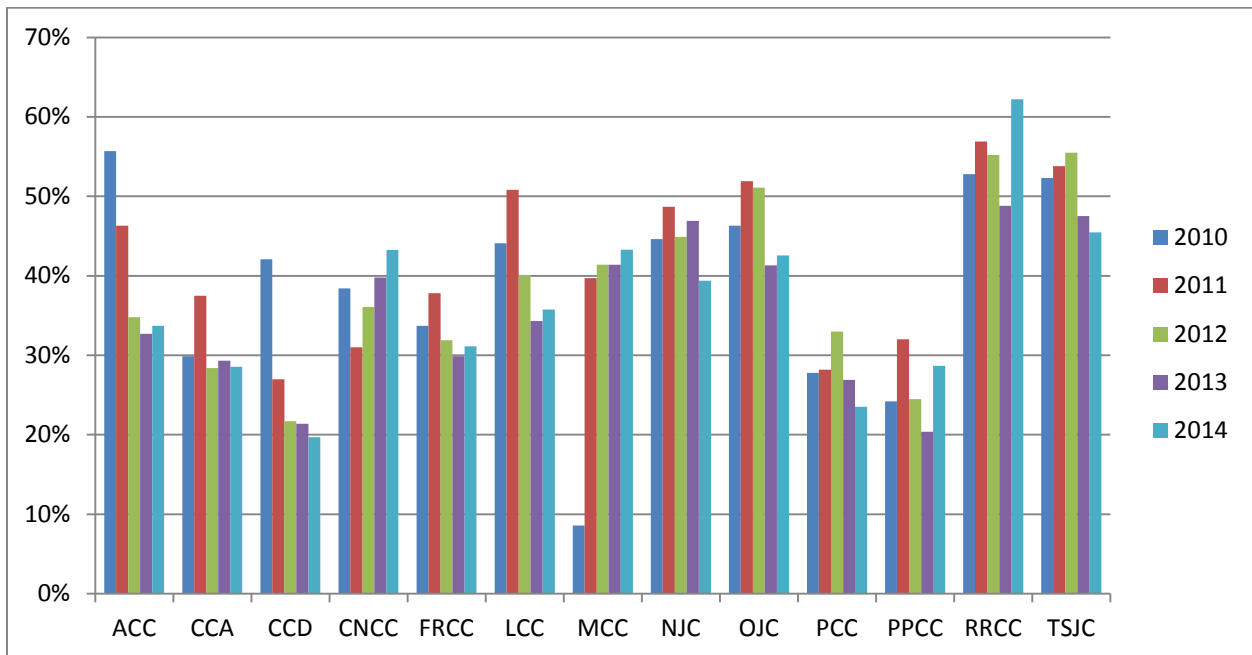
Minority students include students who self report as American Indian or Alaska Native, Asian, Black or African American, Hispanic, or Native Hawaiian or Other Pacific Islander, or who report more than one race.



**Three-year Combined Graduation and Transfer Rate
Fall 2007 Cohort through Fall 2011 Cohort**

| College | Graduation and Transfer Rate 2010 | Graduation and Transfer Rate 2011 | Graduation and Transfer Rate 2012 | Graduation and Transfer Rate 2013 | Graduation and Transfer Rate 2014 |
|-------------------|--|--|--|--|--|
| ACC | 55.7% | 46.3% | 34.8% | 32.7% | 33.7% |
| CCA | 29.9% | 37.5% | 28.4% | 29.3% | 28.5% |
| CCD | 42.1% | 27.0% | 21.7% | 21.4% | 19.7% |
| CNCC | 38.4% | 31.0% | 36.1% | 39.8% | 43.2% |
| FRCC | 33.7% | 37.8% | 31.9% | 29.9% | 31.1% |
| LCC | 44.1% | 50.8% | 40.1% | 34.3% | 35.8% |
| MCC | 8.6% | 39.7% | 41.4% | 41.4% | 43.3% |
| NJC | 44.6% | 48.7% | 44.9% | 46.9% | 39.4% |
| OJC | 46.3% | 51.9% | 51.1% | 41.3% | 42.5% |
| PCC | 27.8% | 28.2% | 33.0% | 26.9% | 23.5% |
| PPCC | 24.2% | 32.0% | 24.5% | 20.4% | 28.7% |
| RRCC | 52.8% | 56.9% | 55.2% | 48.8% | 62.2% |
| TSJC | 52.3% | 53.8% | 55.5% | 47.5% | 45.5% |
| CCCS Total | 37.4% | 40.0% | 35.0% | 31.7% | 34.2% |

Source: IPEDS

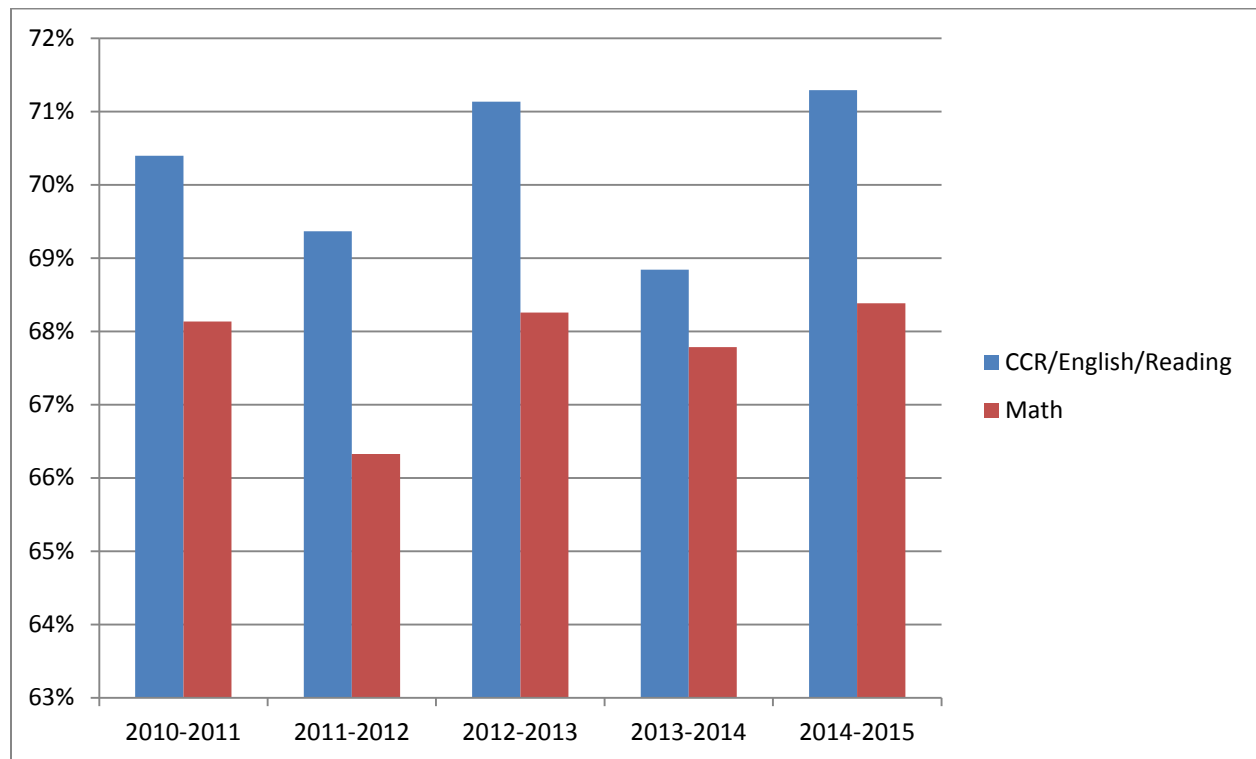


Developmental Education

Developmental Course Completion Rates by Subject Academic Years 2010-11 through 2014-15

| Subject | 2010-2011 | 2011-2012 | 2012-2013 | 2013-2014 | 2014-2015 |
|---------------------|--------------|--------------|--------------|--------------|--------------|
| CCR | n/a | n/a | n/a | 62.0% | 71.2% |
| English | 70.1% | 68.5% | 70.7% | 71.0% | n/a |
| Reading | 71.0% | 71.0% | 72.0% | 73.0% | n/a |
| CCR/English/Reading | 70.4% | 69.4% | 71.1% | 68.8% | 71.3% |
| Math | 68.1% | 66.3% | 68.3% | 67.8% | 68.4% |
| CCCS Total | 69.1% | 67.6% | 69.5% | 68.2% | 69.4% |

Note: Course completion is defined as receiving a passing grade — an A, B, C, or Satisfactory — at the end of the term. The cohort for determining the rates is the sum of the passing and failing grades. College composition and reading (CCR) was introduced in a limited fashion in 2013-14 and was scheduled to replace all reading English developmental courses in 2014-15, although a limited number of students continued to participate in these courses in 2014-15. These students have been rolled into the CCR line in 2014-15. In addition, a “CCR/English/Reading” line is provided to aid in the transition between the two systems in prior years.



**Developmental Education Course Completion Rates by College – All Subjects
Academic Years 2010-11 through 2014-15**

| College | 2010-2011 | 2011-2012 | 2012-2013 | 2013-2014 | 2014-2015 |
|-------------------|------------------|------------------|------------------|------------------|------------------|
| ACC | 76.5% | 77.9% | 79.0% | 72.9% | 71.4% |
| CCA | 68.6% | 69.0% | 72.0% | 66.7% | 75.8% |
| CCD | 65.0% | 60.4% | 63.6% | 63.7% | 66.7% |
| CNCC | 78.6% | 75.6% | 75.8% | 68.8% | 83.3% |
| FRCC | 73.4% | 74.1% | 73.1% | 73.3% | 72.4% |
| LCC | 62.7% | 62.1% | 60.6% | 70.5% | 63.9% |
| MCC | 85.4% | 78.2% | 72.3% | 75.4% | 71.2% |
| NJC | 73.5% | 68.4% | 75.3% | 70.2% | 62.7% |
| OJC | 69.8% | 73.5% | 78.8% | 74.8% | 75.0% |
| PCC | 71.1% | 70.2% | 78.1% | 76.9% | 71.8% |
| PPCC | 64.4% | 63.6% | 62.8% | 64.9% | 66.0% |
| RRCC | 70.3% | 68.4% | 71.5% | 65.4% | 63.1% |
| TSJC | 76.5% | 78.6% | 74.3% | 69.8% | 71.5% |
| CCCS Total | 69.1% | 67.6% | 69.5% | 68.2% | 69.4% |

Note: Course completion is defined as a passing grade -- an A, B, C, or Satisfactory -- at the end of term. The cohort for determining the rate is the number of passing and failing grades.

**Percent of Students Enrolled in Developmental Courses by College
Academic Years 2010-11 through 2014-15**

| College | 2010-2011 | 2011-2012 | 2012-2013 | 2013-2014 | 2014-2015 |
|-------------------|------------------|------------------|------------------|------------------|------------------|
| ACC | 17.0% | 15.7% | 15.1% | 13.5% | 10.3% |
| CCA | 25.0% | 24.8% | 25.8% | 21.5% | 20.8% |
| CCD | 53.1% | 53.5% | 50.1% | 41.0% | 36.0% |
| CNCC | 13.9% | 14.0% | 14.2% | 14.0% | 13.7% |
| FRCC | 25.6% | 25.2% | 24.2% | 21.3% | 17.8% |
| LCC | 16.6% | 14.9% | 18.4% | 13.8% | 14.2% |
| MCC | 12.4% | 11.3% | 11.2% | 9.3% | 7.5% |
| NJC | 16.6% | 19.4% | 18.4% | 17.7% | 15.7% |
| OJC | 23.6% | 21.7% | 21.5% | 17.1% | 19.0% |
| PCC | 28.9% | 27.6% | 24.4% | 19.0% | 17.2% |
| PPCC | 34.9% | 34.8% | 32.6% | 30.7% | 22.7% |
| RRCC | 20.3% | 20.9% | 20.4% | 19.2% | 15.1% |
| TSJC | 21.5% | 23.1% | 20.3% | 15.9% | 13.5% |
| CCCS Total | 28.5% | 28.2% | 26.6% | 22.9% | 19.3% |

**Percent of FTE Students Enrolled in Developmental Courses by College
Academic Years 2010-11 through 2014-15**

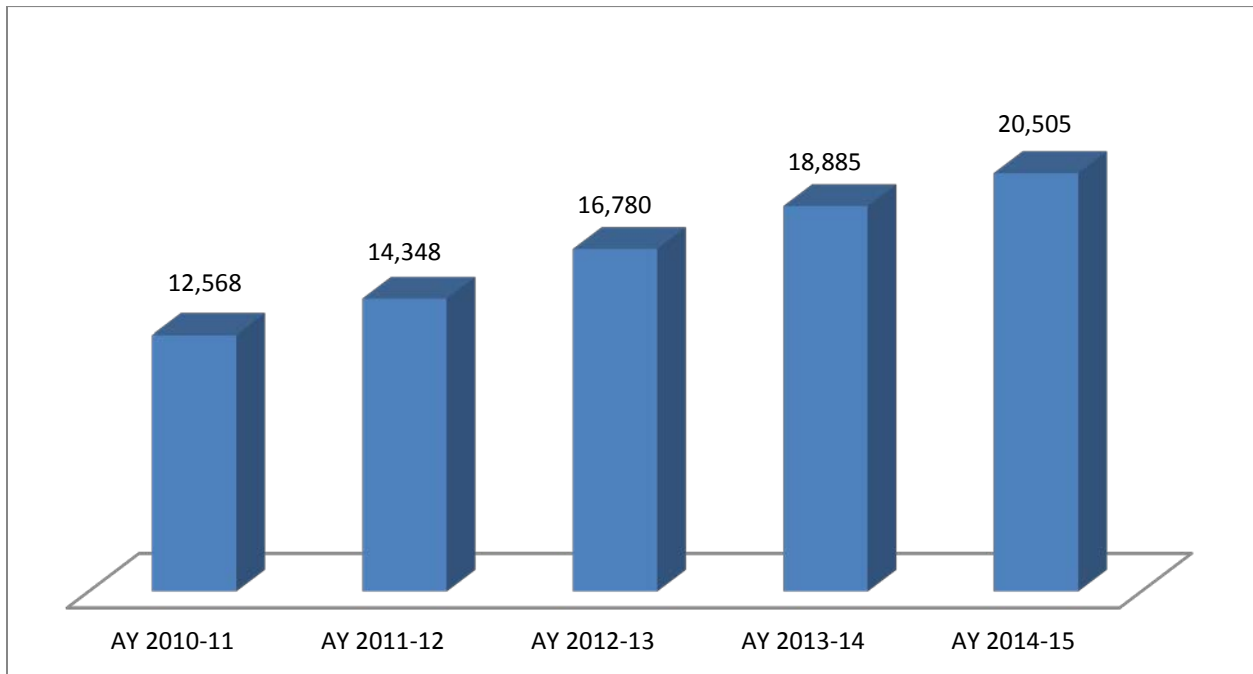
| College | 2010-2011 | 2011-2012 | 2012-2013 | 2013-2014 | 2014-2015 |
|-------------------|------------------|------------------|------------------|------------------|------------------|
| ACC | 9.8% | 10.3% | 10.2% | 8.9% | 5.6% |
| CCA | 11.7% | 12.6% | 17.3% | 10.2% | 7.1% |
| CCD | 26.2% | 26.8% | 25.1% | 19.4% | 17.0% |
| CNCC | 10.6% | 19.2% | 20.2% | 7.0% | 4.2% |
| FRCC | 10.2% | 10.4% | 10.1% | 8.9% | 7.1% |
| LCC | 6.4% | 5.2% | 5.6% | 4.5% | 4.3% |
| MCC | 6.4% | 5.6% | 5.9% | 4.2% | 3.0% |
| NJC | 9.5% | 7.2% | 8.8% | 8.9% | 6.5% |
| OJC | 9.3% | 8.7% | 8.8% | 6.4% | 6.5% |
| PCC | 16.1% | 15.2% | 14.3% | 9.0% | 8.0% |
| PPCC | 14.9% | 15.4% | 14.4% | 13.5% | 8.5% |
| RRCC | 8.5% | 9.2% | 8.9% | 8.6% | 6.3% |
| TSJC | 7.0% | 8.0% | 8.1% | 5.2% | 4.6% |
| CCCS Total | 13.3% | 13.6% | 13.4% | 10.7% | 8.1% |

As reported to CDHE in the annual FTE submission

Concurrent Enrollment

High School Students Attending CCCS Colleges by College 2010-11 through 2014-15

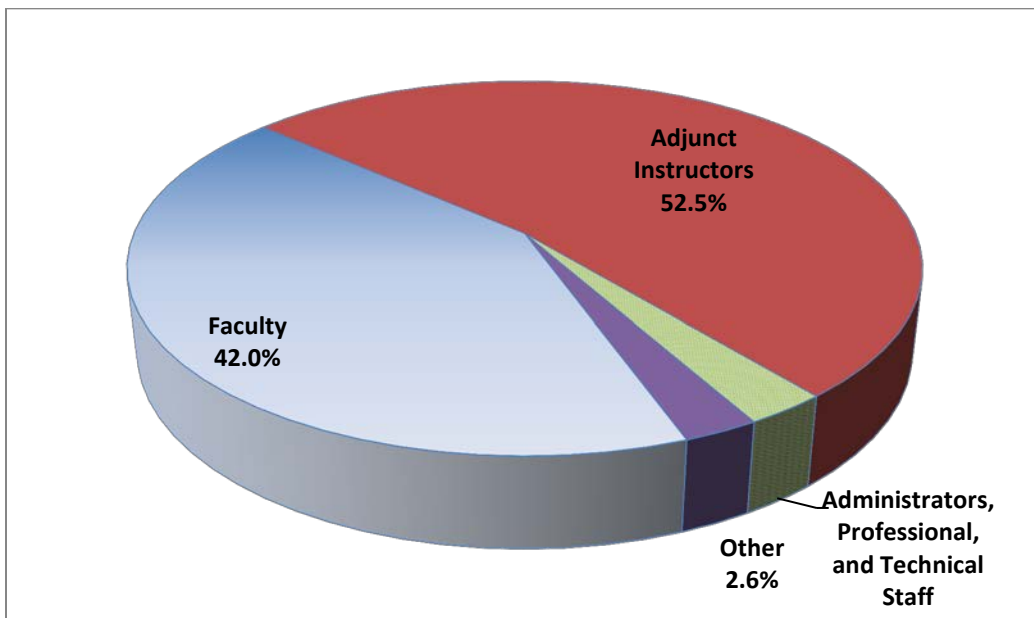
| College | AY 2011 Count | AY 2012 Count | AY 2012 % Chg | AY 2013 Count | AY 2013 % Chg | AY 2014 Count | AY 2014 % Chg | AY 2015 Count | AY 2015 % Chg | AY 2015 % of Total Enroll | Five-Year Change |
|-------------|---------------|---------------|---------------|---------------|---------------|---------------|---------------|---------------|---------------|---------------------------|------------------|
| ACC | 1,988 | 2,532 | 27.4% | 2,964 | 17.1% | 3,553 | 19.9% | 3,579 | 0.7% | 20.6% | 80.0% |
| CCA | 2,212 | 2,763 | 24.9% | 3,002 | 8.7% | 3,185 | 6.1% | 3,222 | 1.2% | 28.4% | 45.7% |
| CCD | 968 | 1,114 | 15.1% | 1,554 | 39.5% | 1,851 | 19.1% | 2,418 | 30.6% | 16.1% | 149.8% |
| CNCC | 424 | 394 | -7.1% | 409 | 3.8% | 488 | 19.3% | 501 | 2.7% | 28.1% | 18.2% |
| FRCC | 1,119 | 1,553 | 38.8% | 2,206 | 42.0% | 2,583 | 17.1% | 3,149 | 21.9% | 11.3% | 181.4% |
| LCC | 396 | 400 | 1.0% | 411 | 2.8% | 387 | -5.8% | 378 | -2.3% | 36.3% | -4.5% |
| MCC | 750 | 746 | -0.5% | 750 | 0.5% | 856 | 14.1% | 803 | -6.2% | 33.4% | 7.1% |
| NJC | 367 | 353 | -3.8% | 418 | 18.4% | 388 | -7.2% | 403 | 3.9% | 15.1% | 9.8% |
| OJC | 554 | 481 | -13.2% | 516 | 7.3% | 584 | 13.2% | 567 | -2.9% | 27.8% | 2.3% |
| PCC | 1,068 | 1,204 | 12.7% | 1,154 | -4.2% | 1,210 | 4.9% | 1,245 | 2.9% | 12.5% | 16.6% |
| PPCC | 1,432 | 1,363 | -4.8% | 1,797 | 31.8% | 1,749 | -2.7% | 2,017 | 15.3% | 10.1% | 40.9% |
| RRCC | 909 | 1,115 | 22.7% | 1,198 | 7.4% | 1,491 | 24.5% | 1,527 | 2.4% | 11.8% | 68.0% |
| TSJC | 381 | 330 | -13.4% | 401 | 21.5% | 560 | 39.7% | 696 | 24.3% | 28.0% | 82.7% |
| CCCS | 12,568 | 14,348 | 14.2% | 16,780 | 17.0% | 18,885 | 12.5% | 20,505 | 8.6% | 16.2% | 63.2% |



Faculty

Proportion of Credit Hours Taught by Staff Classification: 2014-15

| College | Faculty | Adjunct Instructors | Administrators, Professional, and Technical Staff | Other |
|-------------------|--------------|---------------------|---|-------------|
| ACC | 40.2% | 54.3% | 3.2% | 2.4% |
| CCA | 21.3% | 73.8% | 4.4% | 0.4% |
| CCD | 36.4% | 59.8% | 1.8% | 2.0% |
| CNCC | 70.3% | 15.1% | 2.5% | 12.0% |
| FRCC | 37.9% | 60.0% | 0.7% | 1.3% |
| LCC | 51.3% | 34.5% | 7.0% | 7.1% |
| MCC | 47.3% | 45.3% | 1.4% | 5.9% |
| NJC | 74.3% | 11.5% | 6.8% | 7.3% |
| OJC | 67.9% | 10.2% | 11.1% | 10.8% |
| PCC | 47.0% | 46.9% | 3.7% | 2.4% |
| PPCC | 44.0% | 52.6% | 1.9% | 1.5% |
| RRCC | 32.3% | 61.2% | 3.0% | 3.5% |
| TSJC | 56.6% | 32.2% | 8.9% | 2.3% |
| CCCS Total | 42.0% | 52.5% | 2.9% | 2.6% |



Glossary of Terms

American Indian or Alaskan Native: A person having origins in any of the original peoples of North America and who maintains cultural identification through tribal affiliation or community recognition.

Asian or Pacific Islander: A person having origins in any of the original peoples of the Far East, Southeast Asia, the Indian Subcontinent, or the Pacific Islands. This area includes, for example, China, Japan, Korea, the Philippine Islands, and Samoa.

Associate Degree: Normally requires at least two but less than four years of full-time equivalent college work. Associate of Arts (AA), Associate of Science (AS), and Associate of General Studies (AGS) degrees are transfer-oriented awards, while Associate of Applied Science (AAS) degrees are considered professionally oriented, terminal awards.

Black, non-Hispanic: A person having origins in any of the black racial groups of Africa (except those of Hispanic origin).

Certificate (at least one but less than two academic years): Requires completion of a program that would be completed in at least one but less than two full-time equivalent academic years, or designed for completion at least 30 but less than 60 credit hours, or in at least 900 but less than 1,800 contact hours.

Certificate (less than one year): Requires completion of a program that would be completed in less than one academic year or less than 900 contact hours by a student enrolled full time.

Continuing: A student who was enrolled previously at the institution at the current level, including readmitted students, but excluding students considered new transfers, HS concurrent students, summer only students, or study abroad only students.

Degree Level: The level of degree/diploma/certificate conferred by the institution upon the student for the successful completion of a program.

Degree-seeking Students: Students enrolled in courses who are recognized by the institution as pursuing: 1) a degree, certificate, or other formal award conferred by a public institution and approved by CCHE, or 2) a degree, certificate, or other formal award conferred by a private institution.

Degree with Designation: Specific academic programs at the AA and AS degree levels that result in transfer of credits to public four-year institutions and student enrollment at such institutions with junior status, as long as course requirements are met.

Developmental Courses: Courses that focuses on the fundamental knowledge and skills in reading, writing and mathematics that individuals need to function productively in society.

First-time: A student attending post-secondary education for the first time after high school at the level enrolled, where level means undergraduate or graduate.

Graduation Rate: Data are collected on the number of students entering the institution as full-time, first-time, degree/certificate-seeking undergraduate students in a particular year (cohort),

by race/ethnicity and gender; the number completing their program within 150 percent of normal time to completion and the number that transfer to other institutions if transfer is part of the institution's mission.

Hispanic: A person of Mexican, Puerto Rican, Cuban, Central or South American, or other Spanish culture or origin, regardless of race.

Integrated Postsecondary Education Data System (IPEDS): a system of interrelated surveys conducted annually by the U.S. Department of Education's National Center for Education Statistics (NCES). IPEDS gathers information from every college, university, and technical and vocational institution that participates in federal student financial aid programs.

Non-degree Seeking: Enrolled in courses but does not have intentions of pursuing a formal degree or award.

Non-resident Alien: A person who is not a citizen or national of the United States and who is in this country on a temporary basis and does not have the right to remain indefinitely.

Race/Ethnicity: The group to which an individual appears to belong, identifies with, or is regarded in the community as belonging.

Registration Status: The student's status at the reporting institution.

Student Level: The level at which a student is classified during the term which is being reported, based upon the total credits obtained toward completion of a degree/certificate program.

Transfer: A student for whom this term is the student's first term at the institution at the current level, where level is undergraduate or graduate, and the student is known to have previously attended a postsecondary institution at the same level after high school.

Two-year Program: Enrollment is in a non-vocational, sub-baccalaureate program.

Unclassified: A student enrolled in a degree program but who cannot be classified by academic level (e.g., a transfer student whose credits have not been evaluated).

Vocational Programs: Enrollment is in an occupational-specific sub-baccalaureate program.

White, non-Hispanic: A person having origins in any of the original peoples of Europe, North Africa, or the Middle East (except those of Hispanic origin).

Source: Colorado Department of Higher Education and IPEDS.